



# Complimentary local support for foreign owned businesses

In partnership with The Department for International Trade and Midlands Engine



West Midlands  
Growth Company

# West Midlands support for FDI companies

The West Midlands Growth Company (WMGC), the Midlands Engine and the Department for International Trade (DIT) are working together to ensure that foreign owned businesses right across our region, have access to a free of charge, local account manager. We take time to understand each businesses challenges and plans, to enable us to provide valuable services and routes into beneficial support.

Working closely with the regions Local Authorities and Local Enterprise Partnerships, we maintain long-term relationships with our foreign direct investment ( FDI ) clients – supporting their growth, providing regional or sector specific updates and supplying time sensitive services.

All business support is designed to ensure every client is able to grow their operations in the region effectively and with ease. We work with you to help raise brand awareness and your organisations profile across the region and we ensure that each client has the optimum opportunity for networking, introductions and immersing themselves within their sector eco-system.

The WMGC acts as a single point of contact for clients, bringing together a project team from relevant organisations across the city such as property agents, recruitment consultants, public sector departments and universities to deliver a comprehensive package of support.

**“The wealth of young, bright talent in the region was a major draw for expanding. Midlands universities have been for many years the single biggest source of talent recruited into PwC across the UK, but retention in the region is materially increasing.”**

Matt Hammond,  
Regional Managing Partner, PwC



## Population

Birmingham:  
1,141,400  
Combined  
Authority:  
4,669,600



## 9 universities

Including three  
major global  
business schools



## The UK's first test bed

UK's leading region  
for 5G coverage and  
trial centres



## Over 55,000 new jobs

created from  
FDI in last  
ten years



## 56,000 graduates

a year in the  
West Midlands



## Over 28% ...of the population of Birmingham

is under the age  
of 20 - this is the  
highest proportion  
of any major  
European city



## Over £20bn

in FDI Capital  
Expenditure into  
West Midlands in  
last ten years



## The region is at the heart of the UK

with 90% of the  
UK's market in  
reach within four  
hours drive time

# Business Support & Services

**Our toolkit includes international, national and local advice, contacts and information. You will have access to a dedicated account manager who specialises within your sector and who will explore with you the support on offer and talk through your business plans.**

## Services include:

### Property Search & Visits

Utilising our property agent and local authority partners, we can supply options of suitable available properties and join viewings. From Grade A office suites to creative co-working spaces, incubators and industrial spaces – we can advise on all aspects of new premises.

### Business Information & Intelligence

WMGC has access to extensive research (both sector specific and broadly commercial) and can provide information across a wide range of subjects and criteria to help companies build a business case or investigate specific business opportunities.

### PR & Communications

The WMGC has a highly respected PR and communications team that can provide publicity and exposure for West Midlands organisations, helping with your brand awareness.

### Introductions to business network

We have a wide network of partners within the business, professional and financial services sectors and are able to provide introductions to companies throughout and, in some cases, arrange for specifically bespoke services to be offered.

### Talent

One of the strongest requirements for any company moving into a new location or setting up a new operation, WMGC can alleviate a lot of the challenges in ensuring companies select and recruit the best candidates quickly.

### Sector specialists

The WMGC has a team of sector specific specialists, each with their own networks and who are deeply imbedded within their sector ecosystems. Gain access to insights and opportunities relevant to your business with our experts.

### Funding programmes

WMGC's connections and commercial partnerships provide multiple opportunities for funding advice and financial package options. We are able to put businesses directly in touch with all types of funders.

### Export / import policy advice access

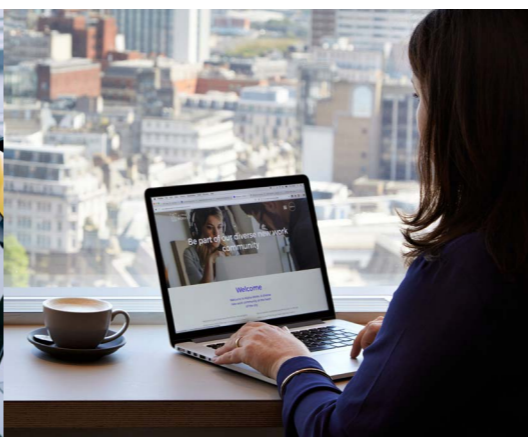
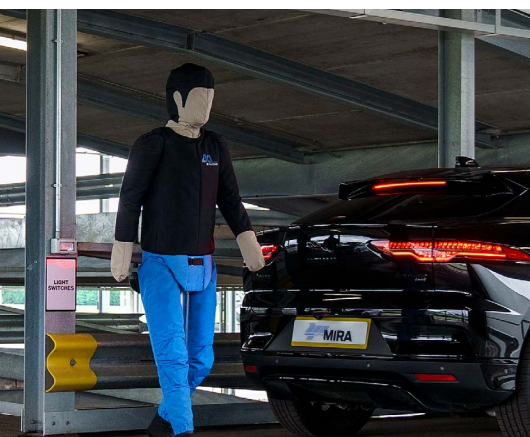
Stay abreast of the latest news and changes. We have direct access to advice teams who can help your business navigate EU exit and trade policies.

### Links to local & national government

Receive invites to regional and national updates direct from government. Join webinars and discussions with the opportunity to speak to councils, LEP's and policy makers.

### Department for International Trade

With direct links to your parent or extended company's DIT account managers, we can jointly support your business objectives. You will also have access to additional support including visa and immigration services and accessing international market opportunities.





The West Midlands is the UK's first Future Mobility Zone.



Birmingham New Street station offers more direct rail connections than any other single station in the UK, making Birmingham City Centre the most accessible employment location outside of London.

### R&D opportunities

Introduction's to the regions technology and R&D centres of excellence. Source collaboration and innovation opportunities with the region's Universities and specialists.

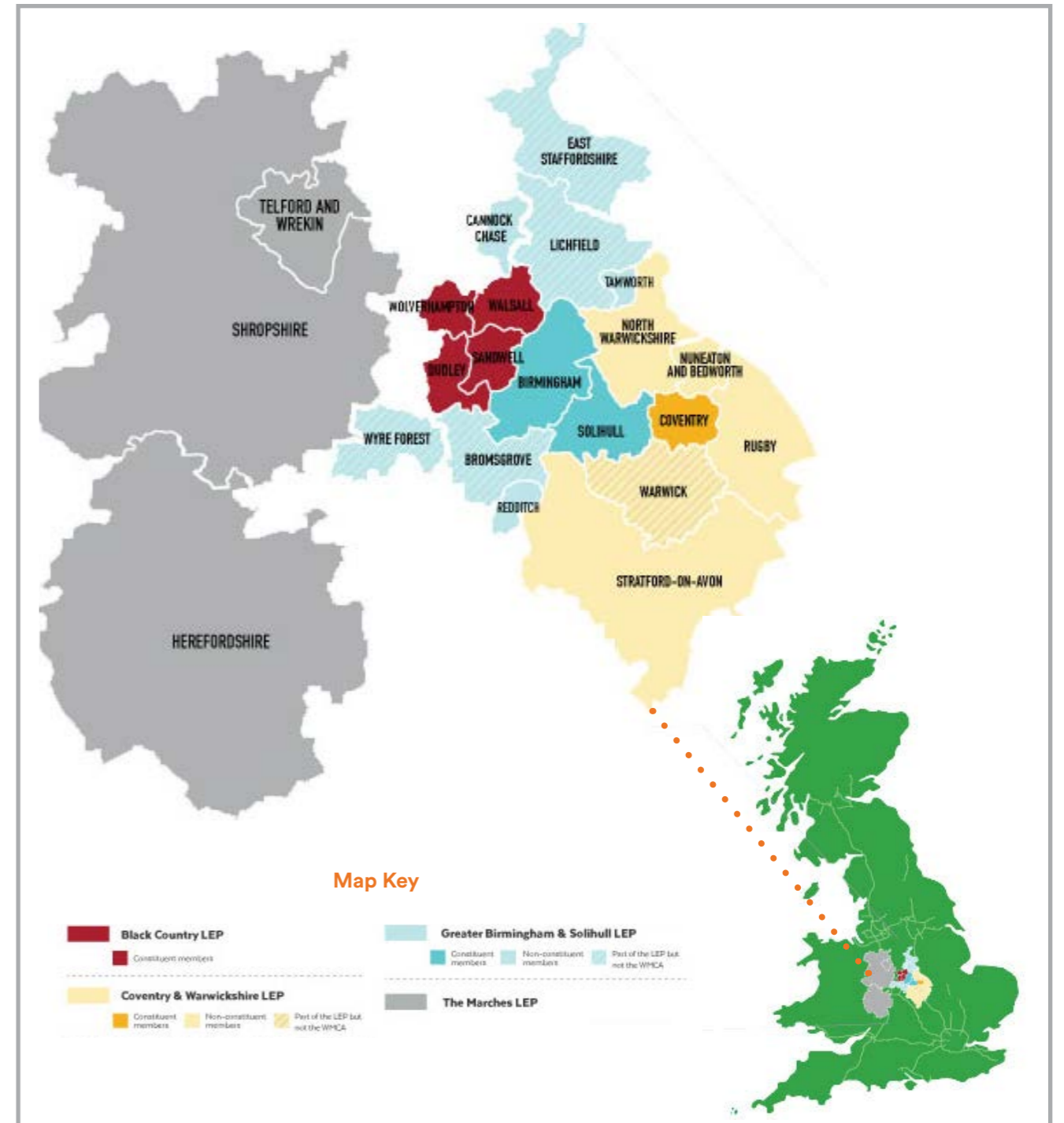
### Expansion & staff retention support

With our in-house research team, we are able to provide market and talent intelligence, supporting your company expansion ambitions. We will also highlight any relevant incentives, funding and local support available for staff retention.

### Relocation Services

The WMGC knows how to look after people who are relocating to the West Midlands region with their current employer and can offer a bespoke Relocation Services package for staff.

## West Midlands Combined Authority Map by Local Enterprise Partnership area

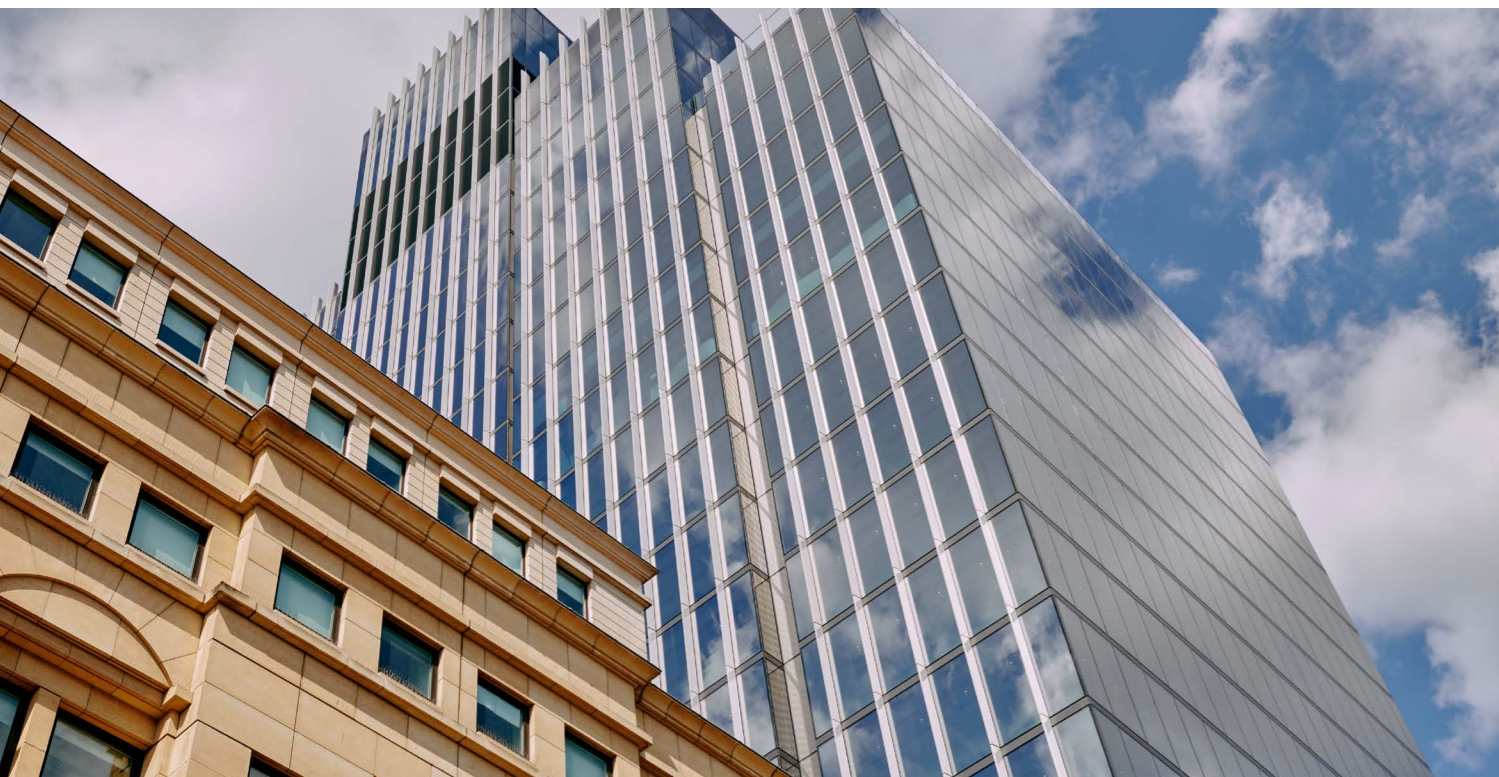


### Get in Touch

If your business wishes to take advantage of the FDI programme, get in touch with the WMGC account management team here:

[invest@wmgrowth.com](mailto:invest@wmgrowth.com)

[investwestmidlands.com](http://investwestmidlands.com)



## Get in Touch

If your business wishes to take advantage of the FDI programme, please get in touch with the WMGC account management team here:

[invest@wmgrowth.com](mailto:invest@wmgrowth.com) [investwestmidlands.com](http://investwestmidlands.com)



West Midlands  
Growth Company

The Colmore Building,  
20 Colmore Circus Queensway,  
Birmingham B4 6AT  
[wmgrowth.com](http://wmgrowth.com)  
[investwestmidlands.com](http://investwestmidlands.com)



Department for  
International Trade

[gov.uk](http://gov.uk)  
[great.gov.uk](http://great.gov.uk)



[midlandsengine.org](http://midlandsengine.org)  
[midlandsengine@trade.gov.uk](mailto:midlandsengine@trade.gov.uk)

