



THE WEST MIDLANDS CREATIVE, DIGITAL & TECHNOLOGY

The West Midlands
One region, many worlds





From Singapore to the UK: Growth Opportunities in the UK's fastest-growing Tech cluster

West Midlands Growth Company Investment Seminar
Thursday 16 February 2023

Thursday 16 February 2023 – West Midlands Growth Company (WMGC)

WMGC Investment Seminar Programme – 15:30pm to 17:00pm

15:30 – 15:35pm Introduction: Sarath Menon, Orissa International (In-market representative of WMGC)

15:35 – 15:40pm Welcome Remarks: Natalie Black CBE, HMTC for Asia Pacific, DIT

15:40 – 16:15pm Presentation: Jon Baty and Chris Lau, WMGC

16:15 – 16:30pm Presentation: Aga Manhao, Founder and Managing Director, Primacy Technology

16:30 – 17:00pm Q&A

17:00 – 17:30pm Networking Reception



NATALIE BLACK CBE

HM Trade Commissioner for Asia Pacific
Department for International Trade



JON BATY

Head of Inward Investment

West Midlands Growth Company



WHY THE UK FOR TECH & SERVICES INVESTMENT?

WHY THE UK?

As the 5th largest economy in the world and home to 67.1 million people, the UK offers investors a significant, globally connected market.

Its unique mix of world-class expertise and talent, flexible and liberal labour laws, and streamlined corporate governance systems make the UK one of the easiest places in the world to set up and conduct business.



1st most attractive investment destination in Europe.



1st in G20 as a globally connected economy.



1st in Europe and 3rd globally for growing and scaling-up business.



4th in the global innovation index.



1st in G7 for research, impact and reach.



5th largest economy with a market of 67.1 million potential customers.



1st quality of green financial products in world's financial centres.

A GLOBALLY COMPETITIVE TAX OFFER

Corporation Tax

19%

Tax Rate

- Payable 9 months after year end.
- Losses carry forward without limit, or back one year for a refund.
- No tax on dividends received unless from a tax haven.
- No withholding tax on dividends paid.
- Capital allowances and super deduction.
- A rate of 25% will apply on profits >£50k from April 2023.

VAT

20%

Unless Exempt

- Register if turnover exceeds GBP85k in any 12 months.
- 20% on most things.
- Pay every 3 months.
- Mistakes under GBP10k – just correct next time.
- First late payment in any 12 months – no penalty.

Shares

NO
TAX

On issue of new shares

- 0.5% Stamp Duty on transfer of shares. Exempt if GBP5 or less.

INCENTIVES TO PROMOTE R&D

From April 1st 2023, the two mechanisms available to businesses under the UK's generous R&D tax regime are:

For SMEs: An additional deduction of 86% of R&D costs from taxable profits (so a total deduction of 186% of cost). Where this creates or furthers taxable losses, a cash payment of 10% of the relevant losses may be available.

For larger companies (or certain SMEs): The Research & Development Expenditure Credit ("RDEC") gives a credit of up to 20% of qualifying R&D expenditure to companies as cash or reduced tax or duties (it will increase taxable profits or reduce losses as relevant).

The definition of claimable R&D costs is broad and generous, including:

- 1) Expenditure incurred as a direct result of R&D, including subcontractors; software & licences, storage & web-hosting; consumables (including stationery & sundry goods).
- 2) UK Employee and directors' wages, UK employers NI, employers pension contributions, based on percentage of time individual spends on R&D.
- 3) 'Reimbursed' travelling expenses relating to R&D work.

TAX RELIEF TO PROMOTE INVESTMENT

Both the Enterprise Investment Scheme (EIS) and the Seed Enterprise Investment Scheme (SEIS) give tax relief to investors.

Income Tax – For EIS up to 30% of the amount invested can be set against Income Tax on investments up to GBP 1 million. For SEIS this is 50% on investments up to GBP 100k.

Capital Gains Tax – for both EIS and SEIS the investor will not pay any tax on their profit when the shares are sold if the investment has been held for at least 3 years.

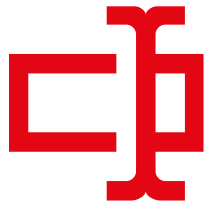
Loss on sale of the shares – again for both EIS and SEIS if the shares are sold at a loss the amount of the loss can be offset against the investors Income Tax for that year or the previous year.

This is clearly very attractive, but there are a lot of quite complicated rules to prevent misuse. Always take specialist advice.



ESTABLISHING A UK COMPANY IS EASY

Each UK Limited company only needs:



A Company Name



1 Shareholder



Shareholders can be a person or another company



1 Director







Directors can be of any nationality and can live in any country

Identify the Directors and any person ultimately controlling 25% or more

ESTABLISHING A UK COMPANY IS EASY



A company can...

-  Be formed in 2 days
-  Trade on the day it is formed
-  Govern itself totally on paper – no physical meetings
-  No other registrations needed unless undertaking a regulated trade



A company does not need to...

-  Visit the UK
-  Specify the trade in the Constitution ('Articles')

HOME TO A SGD1.7 TRILLION TECH SECTOR

UK Tech Sector now worth more than £1tn, and growing significantly faster than the wider economy.

1st in Europe and third in the world for VC investment

– attracting a third of the European total in 2021

1st in Europe for tech unicorns with 123 Unicorns now roaming the UK.

63% Non-UK investment into UK tech has grown to 63% in 2020, up from 50% in 2016.





INTRO TO THE WEST MIDLANDS

AN INTERNATIONALLY SIGNIFICANT ECONOMY



A **SGD188bn**, fast-growing economy



UK's second biggest city-region economy
Equivalent to Hungary



GVA increased every year 2009-2019



UK's top Foreign Direct Investment (FDI) location outside London & South East 2017-21



Birmingham - UK's highest rate of for **start-ups** outside of London for last five years



UK's biggest region for manufacturing output



185,000 students
Nine world-class higher education establishments



2.9m workforce
4.7m population
190 countries



Full-service economy
200,000 businesses



100+ R&D assets
Commercial testbeds & accelerators

UNRIVALLED CONNECTIVITY AT THE HEART OF THE UK

Rail:

- Tripling the West Midlands Metro with a £1.3billion (SGD2.1bn) investment, adding 50 additional trams by 2026 and increasing passengers from 7.2 million to 30 million.
- £1.2billion (SGD1.9bn) of infrastructure investment within the region by 2028.
- Potential to add £14billion (SGD22.5bn) to the West Midlands economy - already 350 firms in HS2 supply chain across the region.
- 1 hour 20 minutes from London, with HS2 to reduce West Midlands to London journey to 38 minutes.

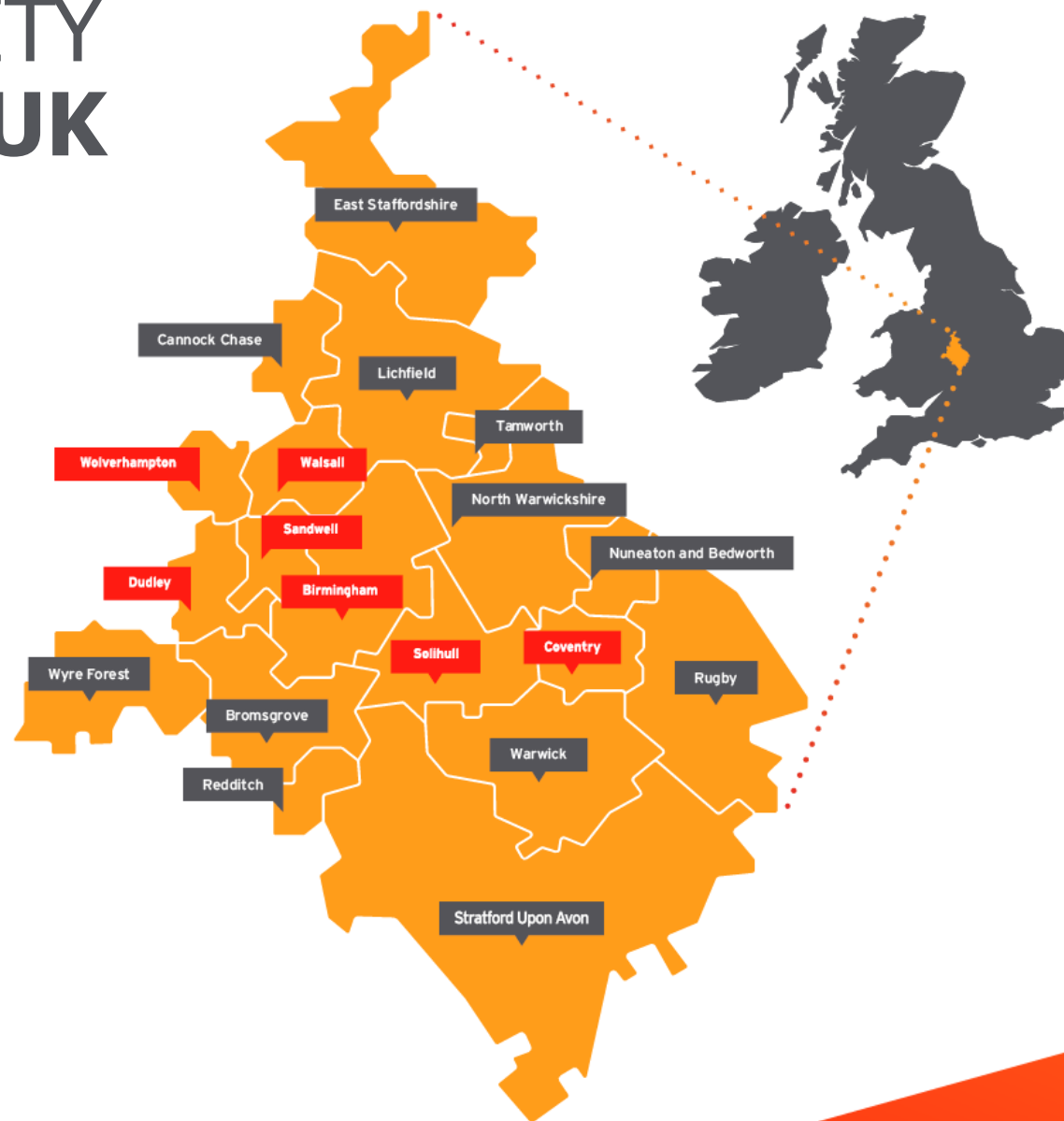
Car:

- 90% of the UK's population being within a four-hour drive.
- Excellent road connectivity via UK motorways.
- Central London is only a 2-hours, 30-minute drive.

Air:

- Birmingham Airport - UK's most accessible airport by road and rail
- Birmingham Airport - UK's third largest regional airport.
- 133 direct flights (including US & Asia), and 424 further onward connections.
- Birmingham Airport is undergoing a £500million (SGD803m) upgrade to boost capacity.

The West Midlands
One region, many worlds



WORLD LEADING TALENT & UNIVERSITIES

The **West Midlands thriving tech sector** is underpinned by a **workforce of 76,000 highly-talented professionals**, playing an integral role in the growth of corporate, SME and start-up businesses. This talent pool is supplemented by **85,850 students studying Science, Maths, Engineering, Tech and Computing**.



9 world-leading universities producing over **60,000 graduates every year**. Over 50% remain in-region.



Companies can access an **additional 127,000 graduates** from **20 universities** within one hours drive of the West Midlands.



Regional strengths in **Software Development, Data Science Analytics and SAP Consultancy**



More **software developers and computer science graduates** than any City-Region outside of London.



The West Midlands
One region, many worlds



UNIVERSITY OF
BIRMINGHAM



UNIVERSITY OF
WOLVERHAMPTON



BIRMINGHAM CITY
University

A MAGNET FOR GLOBAL RELOCATIONS AND EXPANSIONS

Attracting the world's biggest names across a wide range of sectors:-



ASTON MARTIN



Your Gas Network



CHANGAN

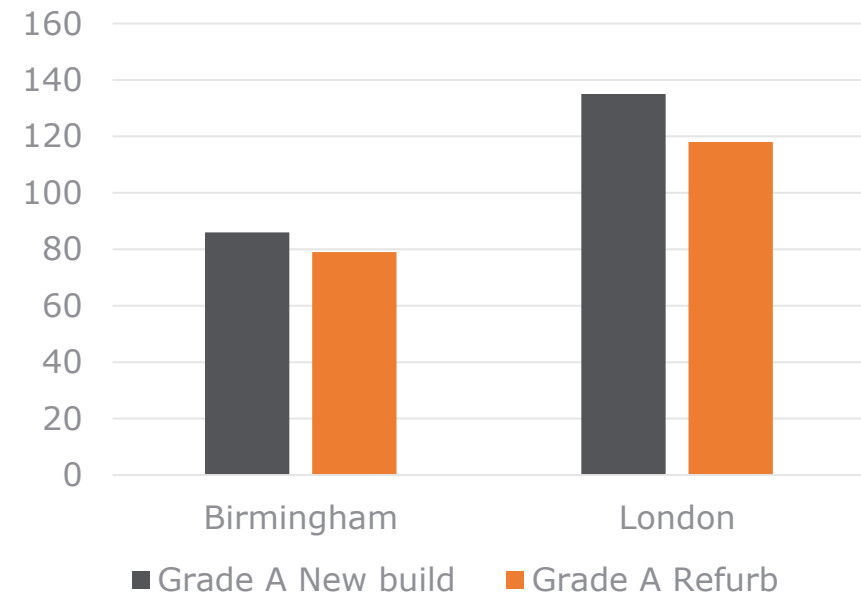


A HIGH-QUALITY AND **COMPETITIVE LOCATION**

Maximise your ROI. We offer **30% – 40% savings** on the cost of skills and property when compared to London yet we're **less than 1.5 hours away by train.**

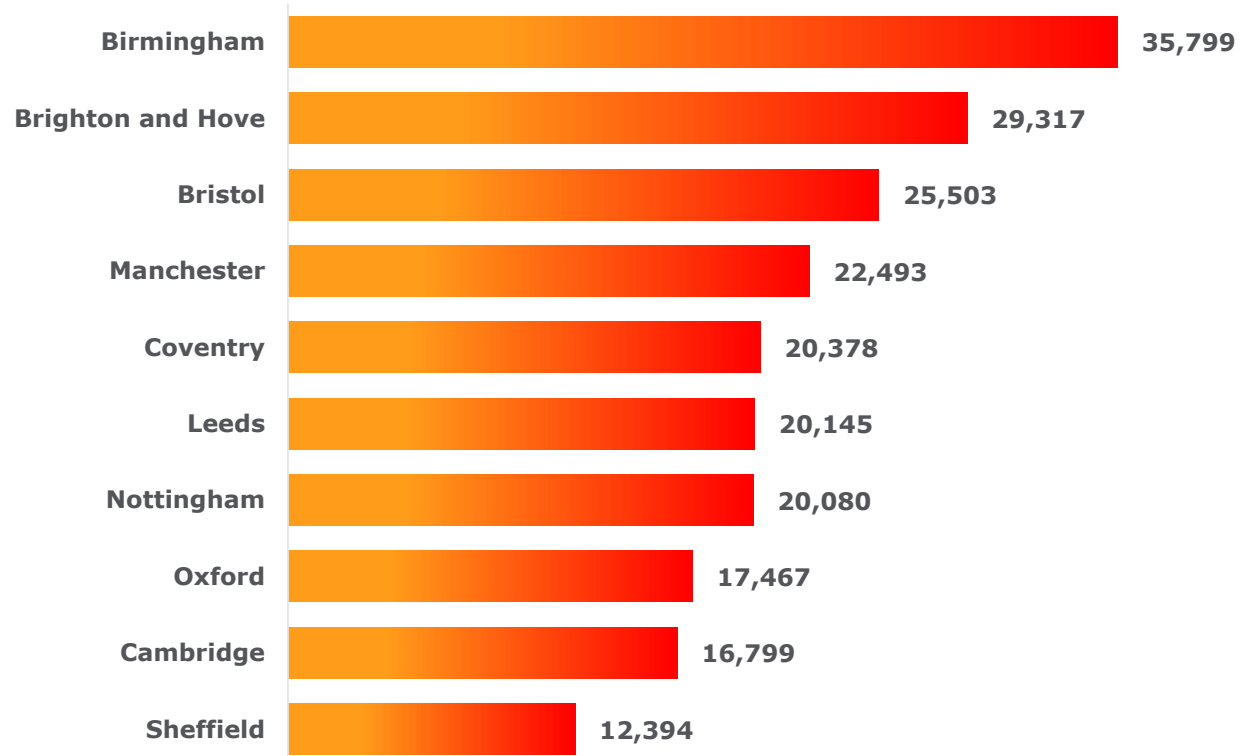
- UK Government has named the West Midlands the **fastest-growing tech sector in the UK** with regional growth outpacing London.
- **52,000** new tech jobs expected in the region by 2025.
- Development and Data **salary inflation significantly below London & Manchester** in 2022.
 - Lower job posting density
 - Higher average employee tenure
- The WMCA continues to pioneer the largest specialist digital skills and talent re-training programme in the UK, offering further diversity of talent available.

Price per square foot office space
(rent, rates & service)



IT'S NOT JUST COMPANIES RELOCATING HERE

INTERNAL UK MIGRATION FROM LONDON, 2015-2020



	LONDON	BIRMINGHAM
Average House Price <small>(Zoopla, 2022)</small>	£704,136 (SGD1,129,846)	£235,681 (SGD378,170)
Affordability Index <small>(Zoopla, 2022)</small>	18.8	8.1
Average Monthly Rent - 1 bed flat <small>(Valuation Office Agency, 2022)</small>	£1,390 (central) £1,095 (outer) SGD2230 SGD1756	£650 (SGD1043)
Disposable Income p.a. <small>(Yahoo Finance, 2019)</small>	£1,078 (SGD1730)	£9,692 (SGD15,553)

**AT THE HEART OF
WATERWAYS AND SHIRES**



**TOP UK ATTRACTIONS
FOR ALL THE FAMILY**



**SPORT, FESTIVALS & EVENTS
THAT CAN'T STAY AWAY**



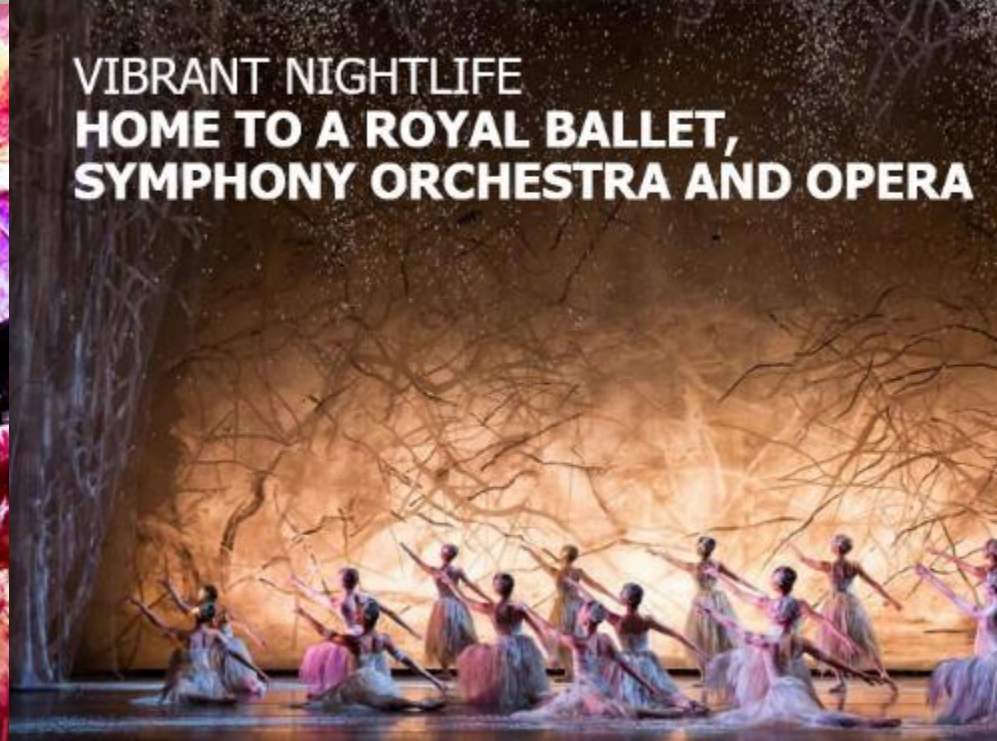
**AWARD WINNING
FOOD SCENE**



**INCLUDING 11 MICHELIN
STAR RESTAURANTS**



**VIBRANT NIGHTLIFE
HOME TO A ROYAL BALLET,
SYMPHONY ORCHESTRA AND OPERA**



BUSINESS, PROFESSIONAL & FINANCIAL SERVICES

The **largest UK Regional Business, Finance & Professional Services cluster** with **45,000 companies** and a work force of **330,000 highly skilled professionals**.

Our Strengths

30%

30% Sector Growth 2017-21

Credibility:

International and National Centre - Big Four, Goldman Sachs, Deutsche Bank & HSBC



Midshoring Hotspot:

- 40% lower operating costs vs London - 'Close enough' for easy access but far enough to benefit from lower costs.

Talent:

23,000 **STEM** graduates each year & a diverse, educated population.



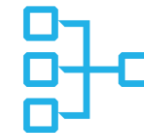
ProfTech:

Strong cluster attracting high-growth international businesses.

Home to SuperTech

Our Opportunities

ProfTech



Back & Middle Office

Front Office



UK Government

Who is **here?**

Goldman Sachs

Deutsche Bank



HSBC



WESLEYAN

AL RAYAN BANK

pwc

ADVANCED MANUFACTURING

At the centre of the **UK's largest automotive, rail and aerospace clusters**, the West Midlands is at the vanguard of solving many of the key global future mobility challenges.

Our Strengths

60%

UK's automotive R&D

Scale, breadth & talent:

UK's leading automotive cluster.
30% of UK cars. UK's largest cluster employing **211,000**; 85,850 students studying **STEM** subjects



46.5k

automotive employees – **biggest talent pool** in UK



UK's Electrification Heartland

Home to **UK Battery Industrialisation Centre** Gigafactory, Coventry UK.

Manufacturing 4.0:

5G test-bed. Enabling IoT and private networks. Manufacturing Tech/Automation cluster.

Mobility Innovation

WMG, MTC, HORIBA MIRA



Rail/Light Rail/Very Light Rail/ DIGI-RAIL expertise
Home to **HS2**

Our Opportunities

Future Mobility

- Automotive
- Future Rail
- Aerospace
- OEM Supply Chain



Tech

- Electrification – Power Electronics, Machines & Drives
- Alternative Propulsion & Hydrogen Power
- Lightweighting and Advanced Materials

Industry 4.0

The West Midlands
One region, many worlds



长安汽车
CHANGAN



**Collins
Aerospace**

LIFE SCIENCES

A leading **UK centre** of Data-Driven Healthcare **expertise, innovation and commercialisation**. Offering companies to **design, test and commercialise** their innovation, from **bench to bedside**.

SGD 16.5bn

Full-service healthcare &
Life Sciences economy

5G

Test bed
opportunities,
real-world testing

Our Strengths

Scale:

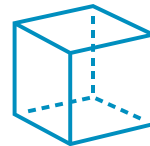
600 companies employing **17,000+**
Eight hospital trusts & **35** regional
centres of clinical research



Data:

Accessible **integrated clinical
and genomic data** from a 4.7
million regional population

MedTech Manufacturing:
Deep MedTech and **Digital Health
supply chains** – AI, 3D printing,
Advanced Manufacturing, Sensors



Expertise & Talent:

Largest **genomics lab hub** in the
country. One of the **world's largest
concentrations** of clinical trial
activity for both drugs and medical
devices **7,500 medical sciences
graduates** each year.



Our Opportunities



Devices

MedTech development

Diagnostics

Precision/genetic medicine



Digital and Data

Who is **here?**

dignio

AAH 

 Alliance
Medical Group, Inc.

Binding
Site 

LOW CARBON

The **UK's fastest growing cluster** with 5,100 companies and the **UK's largest green talent pool** with a 94,000 strong workforce – **generating £12bn (SGD19.3bn) Low Carbon revenue pa.**



2041

Five-year plan for region to be Net Zero by 2041

21,000

new Low Carbon jobs in next five years

2021-26 Growth

+7% revenues pa
+9% new businesses pa

Strengths



Leadership & Policy

- Energy Capital: RESO, EIZs, NZN, SMARHub, 3 Cities Retro-fit projects.



Research & Innovation

- Unrivalled University led innovation eco-system.
- Strategic Infra; Energy Systems Catapult; UKBIC; Gigafactory; The National Brownfield Institute; Birmingham Energy Institute



Talent

Highest concentration of energy professionals in UK and a 211,000-strong manufacturing workforce.

Opportunities



Future of Energy

Geographic and strategic centre of the UK's power distribution network, and a region embracing an innovative, whole-systems approach to smart energy.



Circular Economy & Resource Management

With a strong history in the recycling and metals industry, the region is taking the lead in cleantech solutions and circular economy approaches across manufacturing and construction.



The Built Environment

Quickly becoming the national centre for sustainable construction, with Europe's largest built environment campus



Future Mobility

The UK's first Future Mobility Zone and multi-city 5G testbed for 'real world' EV, CAV and 5G enabled transport R&D

Who is here?



Your Gas Network



carbonTRACK®
INTELLIGENT ENERGY MANAGEMENT



THE WEST MIDLANDS CREATIVE, DIGITAL & TECHNOLOGY


The West Midlands
One region, many worlds





CHRIS LAU

International Markets Lead
West Midlands Growth Company



THE WEST MIDLANDS THE UK'S FASTEST GROWING TECH SECTOR

CREATIVE AND DIGITAL TECHNOLOGIES

The West Midlands is the **UK's fastest growing regional tech sector** and considered a leader in emerging technologies. International companies can enjoy unrivalled market access to **digital transformation opportunities** and world-class infrastructure, enabling the trial of innovative new **products and applications**.

SGD24.1bn

Value of the West Midlands tech sector; an increase of SGD6.1bn on 2021

65k

In Tech Related Jobs (45 min commute)

Our Strengths

Breadth & Capability:

Unrivalled breadth & expertise in applied digital technologies.



Markets:

from Advanced Manufacturing to Financial Services.



Talent

9,100 **computing science students** - UK's 2nd largest concentration

Growth

The UK's fastest growing tech cluster (DCMS)



Innovation

University eco-system & world-class R&D accelerator hubs.

Opportunities



Gaming & Esports

Digital Enterprise Technologies



5G & Telecoms

Mid-Shore Tech Services

Who is **here?**



MICROLAND®



A SELECTION OF OUR TECH ECOSYSTEM

Some of the **world's leading companies operate from the West Midlands**, providing an extensive range of service across **Telecoms, 5G, Gaming, FinTech** and **Digital Enterprise Solutions**.



THE WEST MIDLANDS: AT THE HEART OF EMERGING TECHNOLOGIES

Home to a world-leading research and innovation ecosystem, globally respected universities and an unrivalled pool of diverse talent, the **West Midlands** is a UK leader in the field of emerging technologies.



The West Midlands has the **highest number of emerging tech companies** (2,946), followed by Manchester (2,020) and Leeds (1,594).



Second in the UK behind London for the region with the **highest number of tech and creative companies**.



Leading in 10 out of 13 areas within the tech & creative sector, including **digital transformation, gaming, immersive tech, process automation & software development**.



HOME TO A WORLD-CLASS GAMES CLUSTER

The West Midlands is responsible for 25% of the UK's games market output; predominantly produced in Leamington Spa where over **130 companies employ a workforce of circa 3,000 games professionals**. The region's cluster offers a superb pool of talent with transferable skills across development, AI, VR, AR and UX.



The West Midlands
One region, many worlds

PIONEERING CUTTING-EDGE 5G INNOVATION

The **West Midlands** is home to the **UK's first and only multi-city 5G testbed**, offering new and dynamic opportunities to **test, prove and scale up new 5G products and services**.



UK's best region for 5G coverage with greater capacity to handle next-generation innovations.



SPRING, the UK's first 5G commercial accelerator for enterprise growth & innovation.



The **UK Telecoms Lab** is being built in Solihull, West Midlands; an **£80m (SGD128m)**, state-of-the-art facility researching and testing 5G & 6G technologies.



Designated the **UK's first Future Mobility Zone**, connecting and testing **Connected Autonomous Vehicles**.



WM5G's Connected Ambulance trial oversaw the **UK's** first remote-controlled ultrasound scan conducted over a public 5G network.



STATE-OF-THE-ART CYBERSECURITY

A thriving cybersecurity ecosystem has developed across the West Midlands, with public and private sector organisations utilising the region's **extensive R&D infrastructure** and **innovative talent development initiatives** to position the region at the forefront of Cybersecurity technologies.



Network among a **vibrant community of cybersecurity experts**, with groups including the **Innovation Alliance** and **Midlands Cyber** promoting growth and innovation in the region.



The West Midlands is developing the **next-generation of cybersecurity talent** via the **West Midlands Combined Authority's Bootcamps** and organisations such as **School of Code** and **CGI**.



The region has **NCSC-accredited Academic Centre's of Excellence (ACE)** at the **University of Warwick** and the **University of Birmingham** respectively, as well as the **University of Wolverhampton's Cyber Quarter** – the Midlands Centre for Cyber Security.



The **UK National Telecoms Laboratory** will be based in Solihull, providing a world-class environment for **security experts to test groundbreaking technology**.

The West Midlands
One region, many worlds

The West Midlands: Where Innovative, Award-Winning Companies Thrive



NEXT-GENERATION FINTECH & PROFTECH SERVICES

The West Midlands is home to a thriving community pioneering next-generation technologies in Business, Finance & Professional Services. This includes the UK's first dedicated **ProfTech** supercluster.



One of the **UK's largest & growing FinTech clusters**



1 of 3 established FinTech hubs recognised by the UK Government.



Home to **Europe's largest asset management FinTech innovation hub, The Engine Room**



Home to **SuperTech West Midlands** - the UK's first Professional Technology (ProfTech) supercluster



HOME TO A THRIVING MEDTECH HUB

The **West Midlands** has a **diverse and growing MedTech sector** backed by world-leading research institutions, and large teaching hospitals. The West Midlands' healthcare sector presents a major investment opportunity for technology businesses.



With access to the **UK's largest multi-site testbed for 5G applications**, Digital Health innovators can pilot and stress-test new, real-time mobile applications and services.



Home to one of the most advanced electronic patient record systems in the UK, with **digitised healthcare data drawn from a static population of 4.7m people**.



The **largest genomics R&D cluster in the country**, driving new technology-led solutions including Predictive Health and Personal Medicine.



Birmingham Health Innovation Campus (BHIC), one of the UK's seven Life Science Opportunity Zones (LSOZ), is a 133,000sqft site opening later this year and will harness world-leading academic and clinical strengths with commercial power to accelerate life sciences research.



THE UK'S FIRST FUTURE MOBILITY ZONE

The UK's leading centre for automotive innovation, the West Midlands is at the vanguard of next generation vehicle technologies, delivering transformational innovation in Connected and Autonomous Vehicles (CAV).



Home to the UK's first 5G multi-city testbed and with **200 miles of viable, 5G-connected road for CAM technology,** the West Midlands is an ideal location for exciting collaborations between tech companies and automotive manufacturers.



The Centre for Connected & Autonomous Automotive Research (CCAAR), jointly run by Coventry University and Horiba MIRA, provides unrivalled access to design, build, test and validate CAV solutions for end-to-end connectivity solutions such as vehicle-to-vehicle (V2V) or vehicle-to-everything (V2X).



Locally based companies are developing autonomous systems. RDM's Aurigo 'AUTO-POD®' is a four-seat autonomous pod designed for first and last mile transportation in urban areas.



CAV trials have already taken place locally. A self-driving Jaguar Land Rover Sport successfully maneuvered the busy Coventry Ring Road, changing lanes and merging with traffic.





THE WEST MIDLANDS INVESTOR SUPPORT

The West Midlands
One region, many worlds



WEST MIDLANDS GROWTH COMPANY INVESTOR SUPPORT

The **West Midlands Growth Company** promotes inward investment into the West Midlands, driving business growth, new job creation and exciting opportunities across the region.

WMGC delivers complimentary support to prospective and new investors through its **Investor Catalyst** programme:



In-depth research, tailored insights and benchmarking against other locations



Facilitated access to world-leading universities, to explore R&D and graduate talent



Consultative support throughout business case creation



Signposting & support when accessing public and private finance



Comprehensive, impartial property searches



Networking and intros to over 100+ WMGC partners (ranging from global MNCs to local service providers)



Tailored launch communications and PR consultancy support



Bespoke familiarisation and visit programmes.

FUNDED MARKET ENTRY SUPPORT TO HELP ESTABLISH AND SCALE QUICKLY

Designed to overcome barriers new international investors face when setting up in the UK, the Global Growth Programme is designed to help companies thrive at the heart of the UK's fastest growing technology cluster.

In addition to WMGC's **investor support**, successful applicants will benefit from:



Nine month's funded, high-quality commercial workspace



UK company set-up, market entry & innovation services support



Extensive calendar of industry integration and networking opportunities



Tailored professional service offerings

The West Midlands
One region, many worlds

The West Midlands Global Growth Programme is based at Innovation Birmingham - a next-generation campus where investing, scale-up companies can thrive. Located in the heart of Birmingham's Knowledge Quarter, the facility is operated by Bruntwood SoTech, the UK's leading property provider dedicated to the growth of science and technology companies.

bruntwood SoTech

THE CENTRE OF THE UK'S FASTEST GROWING TECHNOLOGY SECTOR

Over 100 start-ups across 100,000 sq ft of workspace. 100% available in the south of the West Midlands region. 100% innovation focus.

25% of UK spending on tech produced in West Midlands.

1st and 4th VR hubs worldwide in the UK.

95% of UK start-ups are based in the West Midlands.

GLOBAL GROWTH PROGRAMME

Helping you to establish and scale your business in the UK

The West Midlands
One region, many worlds

A SPRINGBOARD TO SUCCESS

+£10m in start-up funding has been raised in the West Midlands since 2015.

+500 start-up businesses have been set up in the West Midlands since 2015.

Develop Key Strategic Business Partnerships

Collaborate with companies at the forefront of the most innovative sectors and help you to scale your business. We offer a range of services including: market research, business plan development, legal and financial advice, and access to a network of industry contacts.

State-of-the-Art Office Facilities

Every business is different, with its own unique set of requirements. Our high specification office spaces are designed to meet the needs of your business. Whether the needs of your business are: a modern, open-plan office; a quiet, focused workspace; or a flexible, multi-use space. We have the facilities to meet your needs.

Tailored Business Support

Benefit from one-to-one meetings with the right support team. We offer a range of services including: market research, business plan development, legal and financial advice, and access to a network of industry contacts.

Enterprise Hub: The Workforce of the Future

By the end of 2022, Innovation Birmingham will be home to the only 1st and 4th VR hubs worldwide in the UK. This is a major milestone for the region, and a testament to the success of the Global Growth Programme. We are proud to be part of this success, and we are committed to supporting the growth of the region's technology sector.



THE WEST MIDLANDS **GLOBAL GROWTH PROGRAMME**

The West Midlands
One region, many worlds



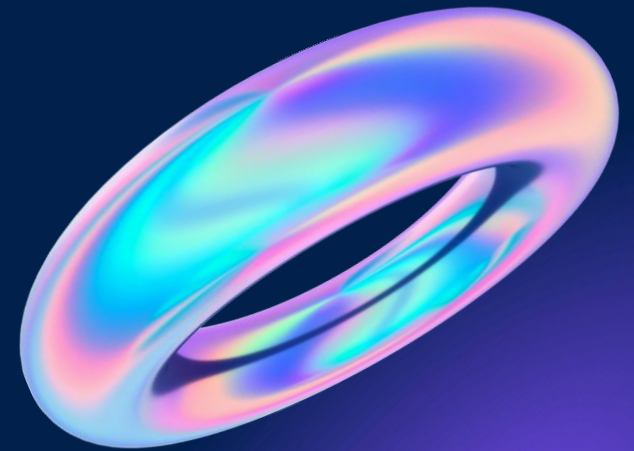


AGA MANHAO

Founder and Managing Director
Primacy Technology

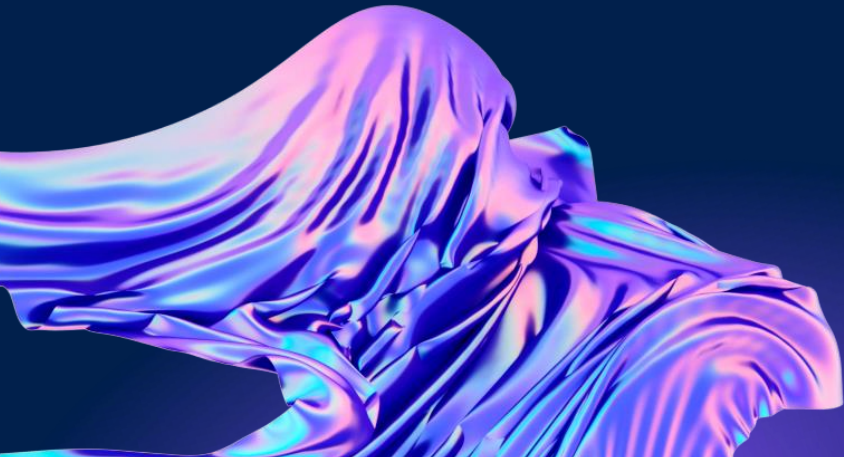
Pack Your Bags

How to pick the perfect place to grow
your startup



About me

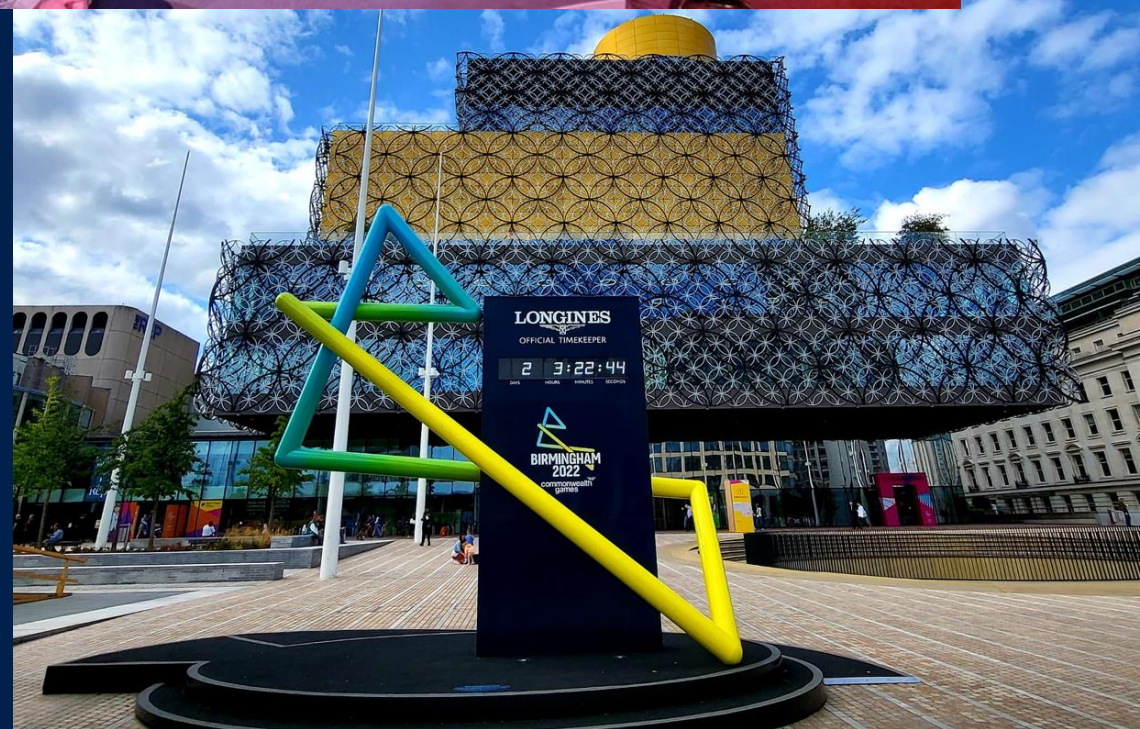
Founder & Managing Director,
Primacy Technology



My journey

*Welcome to Birmingham Proud Host City
of the 2022 Commonwealth Games*

#BeBoldBeBham



Closer look at

- Cost of doing business
- Fund raising, investors & grants
- Access to talent
- Access to business ecosystem
- Infrastructure
- Cultural vibrancy
- Quality of life

Cost of doing business



VS



Fund Raising



Investors

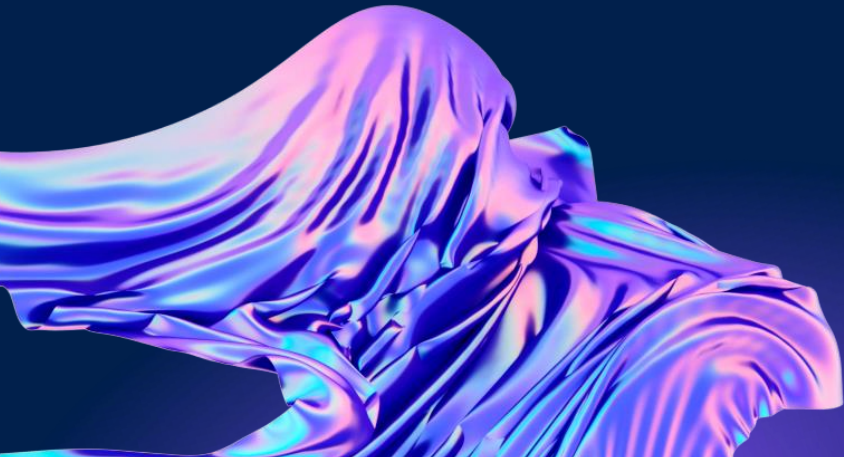
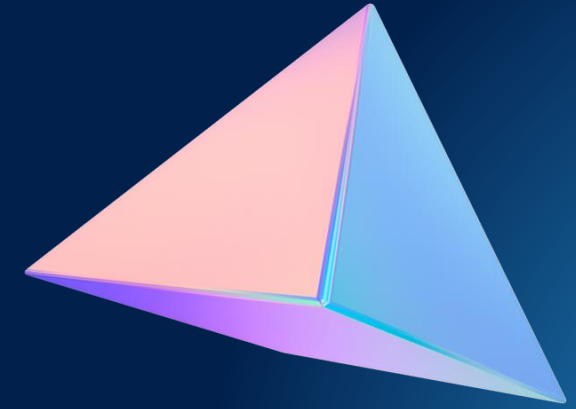


Fund Raising



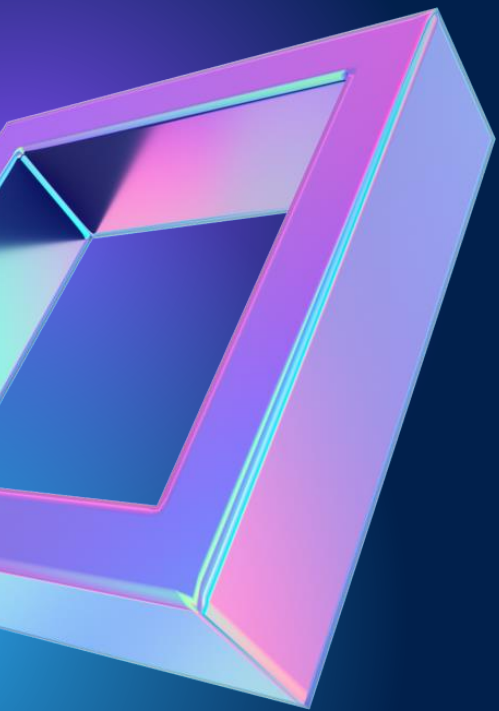
Grants

Access to talent



Ecosystem





Infrastructure



Culture



Quality of life

Housing

Education

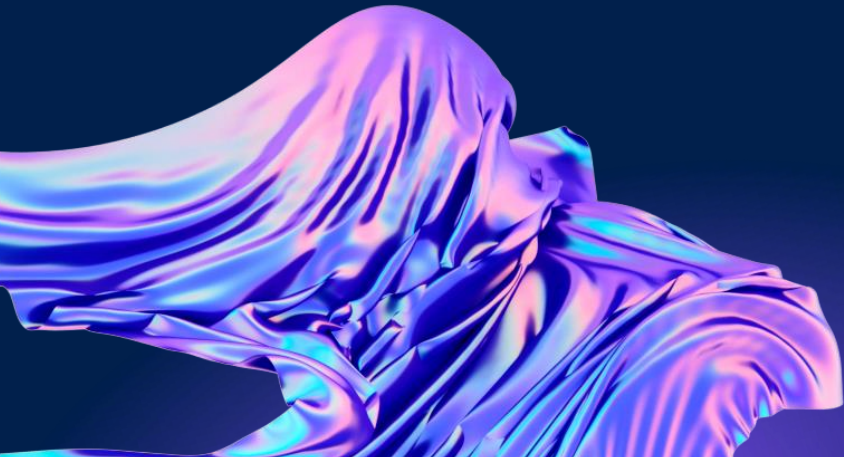
Healthcare

Transportation

Green Space



Thank You
Ask Me Anything



THANK YOU

Contact:

Jon Baty, Head of Inward Investment
jon.baty@wmgrowth.com

Chris Lau, International Markets Lead
chris.lau@wmgrowth.com

www.investwestmidlands.com

The West Midlands
One region, many worlds

