

**THE WEST MIDLANDS**  
ONE REGION, MANY WORLDS



**WEST  
MIDLANDS**  
**GROWTH COMPANY**  
Invest in the West Midlands

# GLOBAL GROWTH PROGRAMME

## DIGITAL TECH HUB

Accelerated UK market entry support  
for science and technology businesses



Contents

02 UK & West Midlands  
03 West Midlands Growth Company  
04 The Global Growth Programme  
06 Digital Tech Hub  
07 Cybersecurity  
08 FinTech, PropTech & ProfTech  
09 Product Design & Digital Solutions  
10 Tech Networks & Digital Skills  
11 Video Games & Digital Creative  
13 Your Springboard to International Success  
16 World-Class Innovation Hubs  
22 Global Success Stories  
24 Enjoy a Better Quality of Life  
26 Is your business eligible for the Global Growth Programme?  
27 Register Now


LAUNCH IN THE UK

A GLOBAL HUB FOR TECH INNOVATION

Home to the world’s third largest tech sector, a globally renowned legal system and with a reputation for world-class R&D, the UK’s proven track record of driving business growth and success is highly attractive for innovative international companies.

Combined with our highly accessible language, state-of-the-art digital infrastructure and unrivalled accessibility, pioneering international firms have everything they need to successfully launch and scale in a thriving UK market of over 60 million people.

Add to that our internationally recognised education system, which includes four of the world’s top ten universities, and it’s clear how the UK can help you realise your business ambitions.

 **LARGEST AIR TRANSPORT SYSTEM IN EUROPE, PROVIDING EASY ACCESS TO INTERNATIONAL MARKETS WORLDWIDE.**

 **NO.1 LOCATION IN EUROPE FOR UNICORN COMPANIES.**

 **25% CORPORATION TAX - ONE OF THE LOWEST IN THE G20.**

SCALE IN THE WEST MIDLANDS

INNOVATION IS IN OUR DNA

The West Midlands is the UK’s leading region for Foreign Direct Investment, recording the highest annual growth rate of all UK locations. We’re working at pace to deliver on the UK Government’s ‘Science & Technology Superpower’ ambitions.

Our region has the perfect combination of world-class research assets, specialist talent, committed public sector support and unique technological capabilities, making it the ideal destination for groundbreaking companies to thrive. Located at the heart of the UK, we’re a three-city region comprising of Coventry, Wolverhampton and Birmingham, the UK’s second city. We’re sustained by a growing population of 4.3 million people and one of the youngest, most diverse talent pools in the UK, with 32% of residents under the age of 25.

Life would look very different without West Midlands’ innovations. The pacemaker, the world’s leading brain cancer drug and the world’s first ibuprofen patch were all developed here. Famed pioneers James Watt, Matthew Boulton, William Shakespeare, James Starley, John Cadbury, and J.R.R. Tolkien all hail from the region.

 **£108BN FULL-SERVICE ECONOMY**

 **THE UK’S MOST ACCESSIBLE AIRPORT BY RAIL AND ROAD, WITH LINKS TO 400 GLOBAL DESTINATIONS**

 **HS2 WILL CONNECT LONDON TO THE WEST MIDLANDS IN JUST 38 MINUTES**

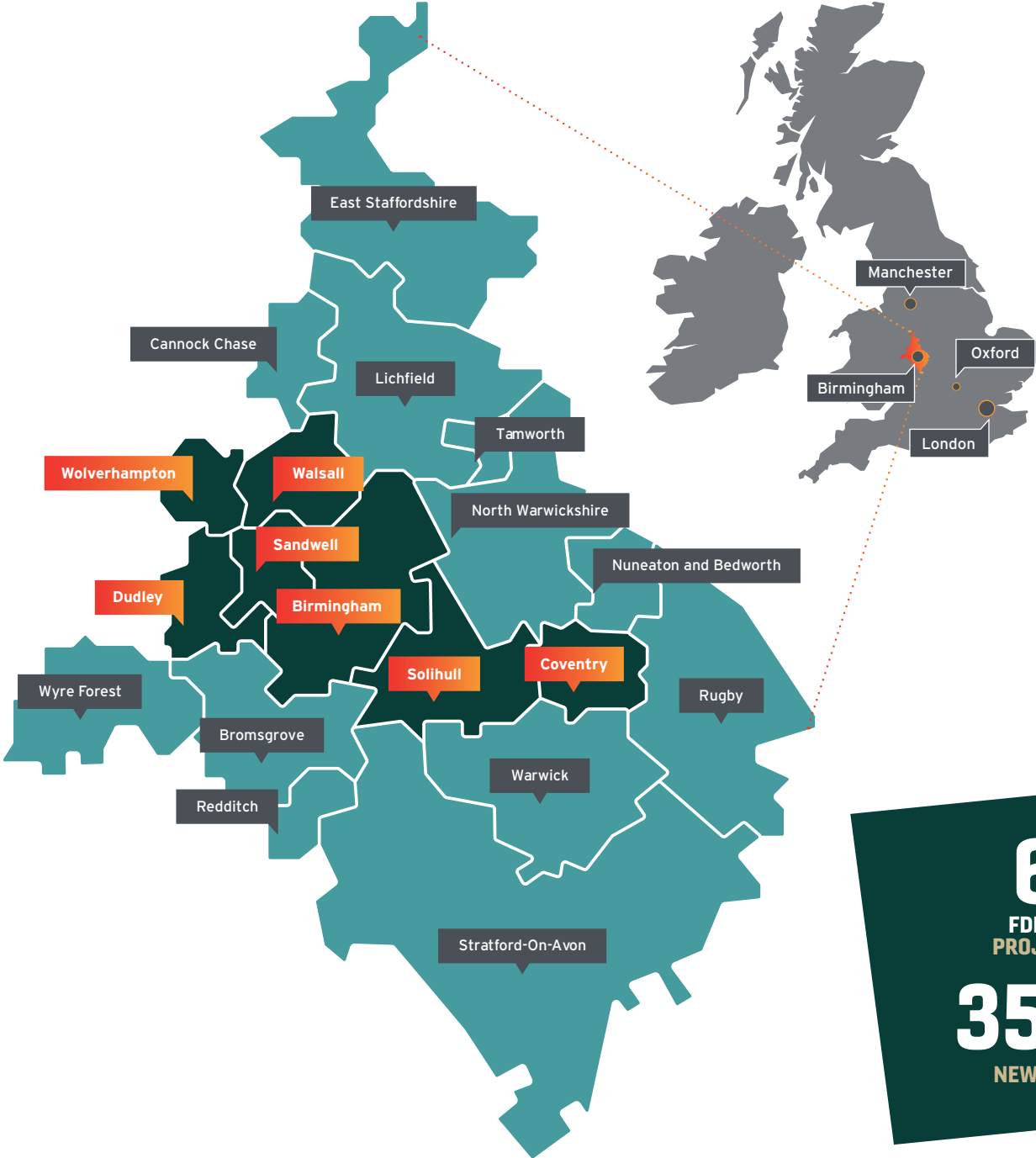
 **90% OF THE UK LIES WITHIN A FOUR-HOUR DRIVE-TIME, INCLUDING BRISTOL, CAMBRIDGE, OXFORD, LEEDS AND MANCHESTER**

WORK WITH THE WEST MIDLANDS GROWTH COMPANY

The West Midlands Growth Company (WMGC) is the official Investment Promotion Agency for the West Midlands region.

Our specialist teams act as strategic partners and consultants to investing companies, ensuring they receive comprehensive support across their entire business plan to make their relocation, expansion and growth here successful.

We’ve helped start-ups, high-growth SMEs and global corporations, such as HSBC UK and Goldman Sachs, to set up operations in the region and maximise growth opportunities.



**600**  
FDI INVESTMENT  
PROJECTS SECURED

**35,000**  
NEW JOBS CREATED



# THE GLOBAL GROWTH PROGRAMME

## THE ULTIMATE UK MARKET ENTRY SUPPORT

The Global Growth Programme is a unique, fully funded UK market entry offering, designed to help international companies invest, establish and scale rapidly. Spanning multiple industries, the Global Growth Programme provides a bespoke, nine-month package of support to ambitious companies at all stages of the development cycle.

We want to work with companies that share our vision to build world-class UK capabilities in CleanTech, Creative & Digital Technologies, Future Mobility and HealthTech: whether you're reinventing the energy grid, launching a new medical device or revolutionising the future of cybersecurity.

## FOUR TECH SECTORS



CleanTech



Digital Tech



Future Mobility



Health/ MedTech



**20**  
**SECTOR SPECIFIC PROGRAMMES**

with access to



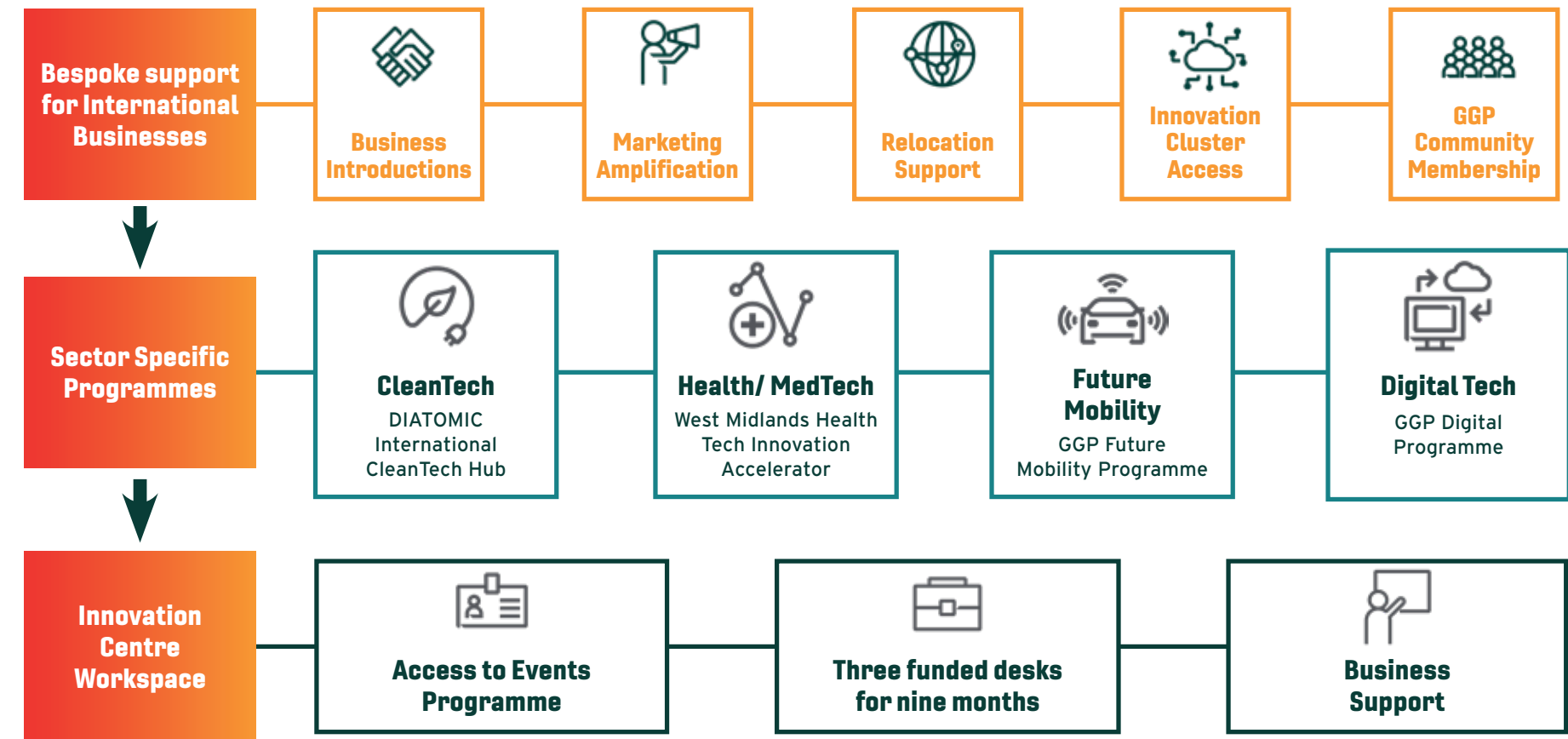
**6**  
**TOP UNIVERSITIES**



**10**  
**INDUSTRY NETWORKS**



**15**  
**LEADING RESEARCH INSTITUTES**



## ACCELERATE YOUR GROWTH WITH BESPOKE BUSINESS SUPPORT

The Global Growth Programme provides three layers of comprehensive value for innovative companies that includes bespoke business support to assist international expansion, access to sector specific innovation programmes, and nine months of sponsored workspace for up to three employees in one of six world-class innovation hubs across the region.

Through a dedicated account manager, you will receive support with establishing your UK operations and facilitated introductions to world-class R&D institutions, industry supply chains and talent providers.

Everything you need to pioneer innovative new products and supercharge your growth.



# DIGITAL TECH HUB

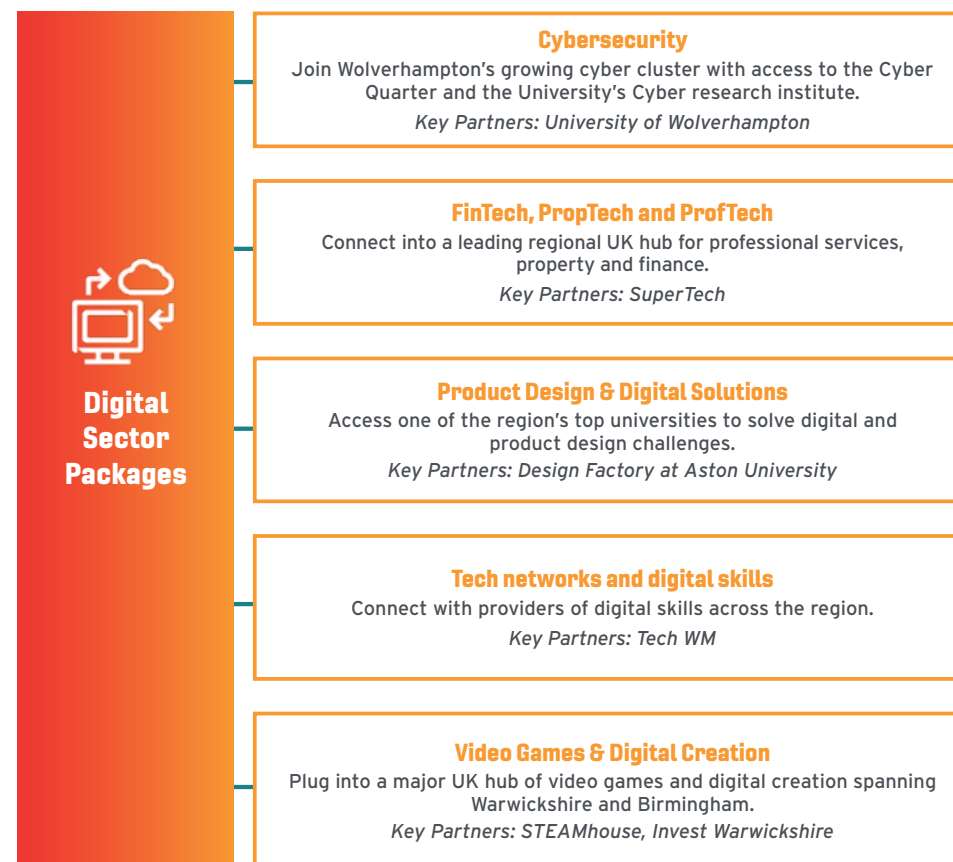
**Recognised by the UK Government as the country's fastest growing tech sector and a leader in emerging technologies, the West Midlands is home to a thriving, innovative tech community. There are ambitious plans to evolve into a global tech hub worth £100bn by 2030.**

Join the Global Growth Programme and take advantage of bespoke Digital Tech business support designed to help you rapidly scale up in the UK. Access state-of-the-art facilities and work with industry-leading innovation hubs like the Cyber Quarter, the University of Warwick's Gillmore Centre for Financial Technology and Birmingham's STEAMhouse to enhance your proposition and achieve UK market success.

## SPECIALIST DIGITAL TECH SUPPORT PACKAGES

Carefully curated by a team of industry experts, the Global Growth Programme's Digital Tech Hub consists of five modules, each designed to offer bespoke, specialist sector support for companies operating within their respective fields.

Participating companies can access world-class R&D facilities, highly respected industry experts and unrivalled business support to successfully test, scale and commercialise exciting game-changing digital technologies.



\*Nine months fully funded workspace. Access to research expertise and facilities may be funded, part funded or not funded. This is determined on a case-by-case basis.

# CYBERSECURITY

**The West Midlands is an international cyber innovation hub offering extensive research and development for cyber security companies to test, trial and develop next-generation products and services.**

Designed for ambitious cyber firms pioneering cutting-edge new security products, the Global Growth Programme's Cybersecurity module offers state-of-the-art business support consisting of:

- **Access** to Wolverhampton's world-class cybersecurity cluster, including its thriving Cyber Quarter, the Midlands' Centre for Cybersecurity, and industry-leading Cyber Research Institute.
- **Simulate and train** with the Cyber Range at the Cyber Quarter to test your products and services in realistic simulated environments. Upskill your team through hands-on training experiences and obtain industry-recognised certifications.
- **Expert research support from the Wolverhampton Cyber Research Institute** in key cyber technologies such as digital forensics, encryption and authentication, mobile communications, AI, machine learning and more.
- **Sponsored office facilities** for up to three desks at The University of Wolverhampton Science Park, or any of the other five locations across the region.
- **Membership** of the University of Wolverhampton Science Park community, consisting of more than 100 innovation-driven start-ups, scale-ups and multi-national companies. Participate in a programme of regular business and networking events.
- **Facilitated introductions** to the broader West Midlands tech ecosystem.
- **Dedicated business support** based on your company's individual needs. Use monthly meetings with a specialist business advisor to receive assistance with commercial introductions, grant funding, professional advice, recruitment and securing local investment.

\*Nine months fully funded workspace. Access to research expertise and facilities may be funded, part funded or not funded. This is determined on a case-by-case basis.

## Cyber Quarter - The Midlands Centre for Cybersecurity

Backed by the expert academic team from the University of Wolverhampton's Cyber Research Institute, the Cyber Quarter's industry-leading specialists support businesses, develop skills and lead in cyber security testing, research and development.



Academic Support



Certification



Simulation & Training



Innovation Centre Workspace



Community & Business Support

# FINTECH, PROPTech & PROFTECH

The West Midlands is the UK's largest cluster of business, professional and financial services companies outside of London. It is home to global names including Deutsche Bank, Goldman Sachs and HSBC UK. The big four advisory firms - PwC, EY, Deloitte and KPMG - are also here, as well as a thriving community of highly successful SMEs and start-ups.

Successfully establish and scale in the UK - the world's most innovative and dynamic financial services sector - via the Global Growth Programme, receiving support consisting of:

- **Free consultation** with SuperTech to receive bespoke guidance and connections to the West Midlands Business, Professional and Financial Services cluster.
- **Access to the West Midlands tech community**, via a dedicated meeting with TechWM to receive bespoke guidance and tailored introductions to the regional supply chain.
- **Exciting research & collaboration opportunities** at the Gillmore Centre for Financial Technology - part of the world-leading University of Warwick Business School. Take advantage of specialist expertise in emerging technologies impacting financial activities including AI, blockchain, cryptocurrencies, machine learning, mobile payments and crowdfunding platforms.
- **Connections to major banks and financial services providers** via SuperTech's Connector Series.
- **Sponsored office facilities** for up to three desks at STEAMhouse or any of the other five locations across the region.
- **Membership** of the SuperTech community and opportunities to participate in a programme of regular business and networking events.
- **Dedicated business support** based on your company's individual needs. Use monthly meetings with a specialist business advisor to receive assistance with commercial introductions, grant funding, professional advice, recruitment and securing local investment.

\*Nine months fully funded workspace. Access to research expertise and facilities may be funded, part funded or not funded. This is determined on a case-by-case basis.

## SuperTech

The United Kingdom's first Professional Technologies (ProfTech) supercluster, SuperTech is dedicated to accelerating market and technological disruption across multiple tech sectors in the West Midlands including FinTech, ProfTech and PropTech. It offers companies unrivalled growth opportunities and access to experts, cutting-edge technologies and connections to top talent.



Institutional Introductions



FinTech Technology Impact Research



Innovation Centre Workspace



Community & Business Support

# PRODUCT DESIGN & DIGITAL SOLUTIONS

Access one of the West Midlands' top universities to solve digital and product design challenges, enabling your business to take your product to the next level.

The Global Growth Programme's Product Design & Digital Solutions package comprises:

- **Set AI/digital design challenges** to solve business and technical problems using data analysis and AI, website/app development and gamification solutions.
- **Access to Aston University's highly skilled student community** to solve your product design challenges, using 3D printing, design consultation, design innovation, physical prototyping or manufacturing.
- **Access to STEAMhouse's creative and digital facilities:** with specialist collaborative, digital labs and production workshops.
- **Sponsored office facilities** for up to three desks at Birmingham City University's STEAMhouse, co-located to Aston University, which offers state-of-the-art creative and production space, or at one of the other five locations across the region.
- **Membership** of STEAMhouse's community of innovation-driven start-ups, scale-ups and multi-national companies. Participate in a programme of regular business and networking events.
- **Facilitated introductions** to the broader West Midlands CreaTech ecosystem.
- **Dedicated business support** based on your company's individual needs. Use monthly meetings with a specialist business advisor to discuss assistance with commercial introductions, grant funding, professional advice, recruitment and securing local investment.

\*Nine months fully funded workspace. Access to research expertise and facilities may be funded, part funded or not funded. This is determined on a case-by-case basis.

## Aston University Design Factory

Part of a network of 39 Design Factories at leading universities worldwide, Aston University's Design Factory delivers cutting-edge research, sustainable design, novel ideas and fresh perspectives to develop new products, digital services and business models. Access innovative minds to your product and digital design challenges.



Academic Support



Digital & AI Solutions



Product Design & Prototyping



Innovation Centre Workspace



Community & Business Support

# TECH NETWORKS & DIGITAL SKILLS

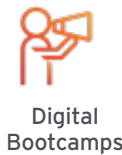
The West Midlands' world-renowned universities produce 66,000 tech-related graduates every year, supplying highly skilled talent to over 12,500 digital and tech-focused companies.

The region's rich, diverse tech talent pool has attracted global names including Goldman Sachs - as well as the world's leading Shared Services Providers - enabling firms to service customers across both the UK and international markets.

The Global Growth Programme's Tech Networks & Digital Skills package connects participating firms with digital skills providers and the region's tech community, offering:

- **Free consultation** with TechWM to provide guidance and connections to the region's digital skills providers, from coding bootcamps to graduate, post-graduate and experienced tech talent.
- **Access to TechWM's Tech Connect Platform**, the online platform from the UK's largest tech community outside of London. This also includes face-to-face consultations and regular networking events.
- **Sponsored office facilities** for up to three desks at Bruntwood SciTech's Innovation Birmingham or Birmingham City University's STEAMhouse, or one of the other four locations across the region.
- **Facilitated introductions** to the West Midlands' broader tech ecosystem.
- **Dedicated business support** based on your company's individual needs. Use monthly meetings with a dedicated business advisor to receive assistance with commercial introductions, grant funding, professional advice, recruitment and securing local investment.

\*Nine months fully funded workspace. Access to research expertise and facilities may be funded, part funded or not funded. This is determined on a case-by-case basis.



Digital Bootcamps



University Recruitment



Innovation Centre Workspace



Community & Business Support

# VIDEO GAMES & DIGITAL CREATIVE

The UK video games market is the sixth largest in the world, with 25% of the country's output produced in the West Midlands.

The West Midlands has over 130 video games companies across the region. Leamington Spa - also known as 'Silicon Spa' - is home to 50 companies including major industry names such as EA Sports, Microsoft Xbox Studios and Ubisoft.

Enable your business to tap into a major UK hub of video games development and digital creation through the Global Growth Programme:

- **Access to Creative Futures in Warwick's Innovation District**, offering a digital skills programme, a creative industries network and the campus's state-of-the-art eSports Centre.
- **Introductory meeting** with Invest Warwickshire to provide introductions to various local initiatives and sector groups within the Coventry & Warwickshire Digital Creative Community, including:
  - The £7.5m Coventry & Warwickshire Creative & Immersive Launchpad
  - The Warwickshire Games Collective
  - Collaborative opportunities with other video games clusters such as Guildford
  - Introductions to local universities and facilities including motion capture, immersive studios and a largescale product Hyperstudio
- **Access to STEAMhouse** offering creative project space and artist's studio, state-of-the-art production space and workshops, supporting prototyping in print and materials, digital design, digital manufacture, resistant materials (wood, metal, plastics), and immersive AR/VR technology and 5G test beds.
- **Access to the West Midlands tech community**, via a dedicated meeting with TechWM to receive bespoke guidance and tailored introductions to the regional supply chain.
- **Sponsored office facilities** for up to three desks at either:
  - University of Warwick Science Park which is close to the University of Warwick eSports Centre and Leamington Spa's video games cluster **OR**
  - Birmingham City University's STEAMhouse in Birmingham's city centre Knowledge Quarter, offering state-of-the-art creative and production space **OR**
  - One of the other four Innovation Hubs across the region.
- **Dedicated business support** based on your company's individual needs. Use monthly meetings with a specialist business advisor to receive assistance with commercial introductions, grant funding, professional advice, recruitment and securing local investment.

\*Nine months fully funded workspace. Access to research expertise and facilities may be funded, part funded or not funded. This is determined on a case-by-case basis.



Digital & AR/VR Production Facilities



Video games Community Introductions



Innovation Centre Workspace



Community & Business Support



# YOUR SPRINGBOARD TO INTERNATIONAL SUCCESS

The Global Growth Programme provides comprehensive support enabling companies to swiftly launch and scale UK operations.

## FOUNDERS & EARLY-STAGE BUSINESSES

Our programme offers expert support in setting up and testing your proposition and business model. We'll help with securing valuable seed funding. Take advantage of high spec hot-desking and co-working spaces, benefit from tailored business advice, access a network of unique research data and impressive facilities and get support with taking the necessary steps to protect your Intellectual Property.

## HIGH GROWTH BUSINESSES

Receive specialist assistance setting up your UK subsidiary and implementing your market entry plan, along with access to collaboration opportunities with an unrivalled network of innovation partners.

We'll help you validate your 'go to market' approach for the United Kingdom and Europe, as well as build local business contacts, enabling you to develop a high-quality commercial pipeline.

You'll also benefit from strategic relationships with businesses and institutions that can offer access to skills, talent, innovative research and investment. All vital to driving business success.

## CORPORATE INNOVATION

De-risk and develop your innovation strategy using our programme to advance and test new products and services, launch new ventures and spin outs, and set up new commercial collaborations.

The Global Growth Programme connects your business directly into local entrepreneurial networks and leading research institutions that can support transformation in your business.

We'll also connect you to sources of graduate and postgraduate talent as well as help to relocate your employees to the region.

The image block contains two photographs. The top photograph shows a man with dark hair and glasses, wearing a green V-neck sweater over a white collared shirt, sitting at a desk and smiling while looking at a laptop. The bottom photograph shows two women in a meeting. One woman, with blonde hair and wearing a patterned top, is seated in a red chair and looking towards the other woman. The second woman, with dark hair and wearing a dark patterned top, is seated at a white table, smiling, and gesturing with her hands while talking. A laptop and a blue cup are on the table.

13

We'll also connect you to sources of graduate and postgraduate talent as well as help to relocate your employees to the region.

BESPOKE SUPPORT DESIGNED TO MEET THE NEEDS OF YOUR BUSINESS

Every business is different, with its own unique set of challenges and requirements. The Global Growth Programme's suite of support is designed to meet a range of needs specific to your business size or sector.

			EARLY-STAGE BUSINESS	HIGH-GROWTH BUSINESS	CORPORATIONS
Relocation	Setting up a UK entity/subsidiary	Providing specialist legal and tax advice to set up your UK company entity	●	●	
	Setting up a new Global HQ in the UK	Providing specialist legal and tax advice to move your existing headquarters to the UK	●	●	
	Team orientation	Support with relocation and adapting to living and working in the UK	●	●	●
	Community Support	Being part of a peer group community of other international tech businesses	●	●	●
Commercial Launch	Guidance in shaping the proposition & business model	Helping you define how you will commercialise your technology	●		
	Market testing and entry	Helping you to validate the market for your products and services in the UK	●	●	●
	Commercial traction	Commercial introductions into UK-West Midlands business networks	●	●	●
	Corporate collaborations	Linking corporates to entrepreneurial companies with innovative products and services		●	●
	Securing IP Protection	Access to intellectual property specialists to advise on patents and copyright, both in the UK and internationally	●	●	

			EARLY-STAGE BUSINESS	HIGH-GROWTH BUSINESS	CORPORATIONS
Funding	Preparing for and accessing seed funding	Helping you prepare to raise your initial funding and making introductions to local angel and early-stage funding networks	●		
	Preparing for and accessing growth funding	Helping you prepare to raise Series A+ funding and making introductions to the local VCs and investment community		●	
Research & Product Development	Accessing specialist research facilities	Access to leading UK facilities to accelerate the development, testing and demonstration of your products	●	●	●
	Accessing specialist research and technical expertise	Providing direct links to world class universities and research institutes in the region	●	●	●
	Access to regulatory support	Access to specialists in regulation to assist you in securing UK accreditation	●	●	●
Talent	Access to clinical support	Access to leading hospitals, clinicians and the NHS	●	●	●
	Support with talent recruitment	Connections to specialist headhunting and recruitment firms	●	●	●
	Accessing student placements and graduates	Connections to placements and graduate recruitment in the local universities	●	●	●
Profile building	In-market communications	Amplification of your company communications in the West Midlands and broader UK market	●	●	
Office Space	Fully funded desk space within an innovation community	Three desks for nine months within a choice of Innovation Districts across the West Midlands offering regular networking events	●	●	●



# THRIVE IN OUR WORLD-CLASS INNOVATION HUBS

The Global Growth Programme brings together specialist technology hubs from across the region to offer you access to exceptional expertise and opportunities. Located across Birmingham, Coventry and Wolverhampton, each state-of-the-art facility is a centre of innovation and cutting-edge research, where CleanTech, Future Mobility, MedTech and Creative & Digital Tech firms collaborate and thrive. They also act as a gateway to additional West Midlands R&D institutions and business accelerators.

ACCESS THE WHOLE REGION  
**SIX LANDING HUBS**



## BIRMINGHAM

The largest UK city outside London, Birmingham is constantly evolving. Once an 18th century manufacturing powerhouse, the city is now a world-class centre of business, culture, education and technology that is using a long tradition of innovation to shape the future. A fascinating hub of diverse cultures, fine cuisine and contemporary living, Birmingham is an excellent choice for business and pleasure.

The Global Growth Programme offers access to three innovation hubs across the city.

### INNOVATION BIRMINGHAM

bruntwood  
SciTech

In the heart of Birmingham's city centre Knowledge Quarter is Bruntwood SciTech's Innovation Birmingham, a cutting-edge digital tech campus with a vibrant community of over 120 forward-thinking tech companies.

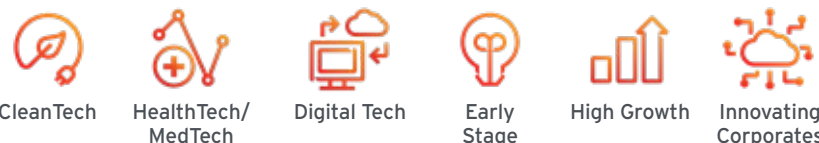
It has close links to neighbouring Aston and Birmingham City Universities and their world-class specialist institutes and facilities in areas including transport digitisation, bioenergy, cyber-forensics, AI data science and software development. Innovation Birmingham offers unique collaboration opportunities, opening doors for product development, funding, talent and commercial growth.

Over the past decade, the hub has helped more than 1500 companies grow their business in the region's tech industry.

#### Contact Details

Innovation Birmingham, Holt Street, Birmingham, B7 4BP  
w: [bruntwood.co.uk/our-locations/birmingham/innovation-birmingham/](https://bruntwood.co.uk/our-locations/birmingham/innovation-birmingham/)

#### Sector Specialisms



"This is absolutely the place to be for tech. Innovation Birmingham has got a track record helping businesses not just scale, but scale successfully, scale sustainably and have access to investment, business support and skills that would otherwise be really hard to come by."

Yiannis Maos MBE, CEO at TechWM



# BIRMINGHAM HEALTH INNOVATION CAMPUS

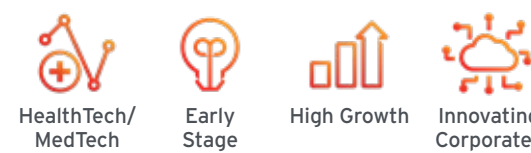
From early 2025, the new Birmingham Health Innovation Campus (BHIC) will offer premium lab and office space in the heart of a critical cluster of health excellence. Delivered through a long-term collaboration between the University of Birmingham and Bruntwood SciTech, BHIC opens pathways into valuable networks for research, funding, product development and collaboration in key areas of healthcare innovation including Biopharma, MedTech, Precision Medicine and Genomics.

BHIC is the home of the University of Birmingham's Precision Health Technologies Accelerator (PHTA) which provides access to the expertise, resources and infrastructure required to enable translation of healthcare innovations - including phase one to three clinical trials and real-world evaluation.

The campus is also home to the new £14m West Midlands HealthTech Innovation Accelerator (WMHTIA), which provides unprecedented access to expert infrastructure and product development support at every stage of the innovation process, including prototyping, regulation, clinical trials and evaluation.

**Contact Details**  
Aston Webb Boulevard, Selly Oak, Birmingham, B29 6SJ  
w: bruntwood.co.uk/our-locations/birmingham/birmingham-health-innovation-campus/

## Sector Specialisms



"I think the phrase 'unexpected ways' sums up the STEAMhouse. If you work in an environment where there are other business owners and amazing staff, you invariably find that you get help in ways that you didn't even know that you needed."

John Morse-Brown, Chief Operating Officer at Pigeon Posted

# STEAMHOUSE



Powered by  
BIRMINGHAM CITY  
University

Located in Birmingham's Knowledge Quarter, STEAMhouse provides a wealth of support to help your digital tech business launch, sustain and scale. The hub is home to exciting start-ups and scale-ups in sectors ranging from software development and digital marketing to blockchain and cybersecurity.

With over 120,000ft² of high-quality space located over five floors, STEAMhouse offers state-of-the-art production space and workshops with access to immersive AR/VR technology and a comprehensive business support package.

Alongside initial onboarding and in-depth client needs analysis to implementing the support required to grow your business, STEAMhouse offers a superb programme of business workshops, mentoring and networking events. The hub also hosts a 72-desk business incubator, where entrepreneurs and fledgling businesses can get all the support and knowledge they need to hit the ground running.

**Contact Details**  
Belmont Row, Birmingham, B4 7RQ  
w: steamhouse.org.uk/

## Sector Specialisms



# TYSELEY ENERGY PARK

Tyseley Energy Park (TEP) is located at the heart of Birmingham Green Energy Innovation District in the east of the city. With its mission to transform clean energy innovation in Birmingham and the West Midlands by stimulating and demonstrating new technologies and turning them into fully commercially viable energy systems, TEP will contribute to the West Midlands' commitments to become a net zero carbon economy by 2041.

Within the park is the University of Birmingham's Energy Innovation Centre (BEIC), a low and zero carbon refuelling station, a biomass power station, a hydrogen electrolyser, and the National Centre for the Decarbonisation of Heat, which is due to be completed in 2026.

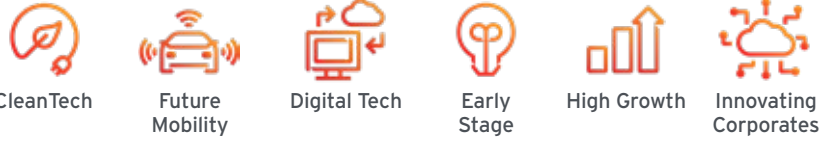
TEP has created an environment where heat and power, and waste to value focused businesses can receive support and collaboration opportunities in a location that is a key focus of Birmingham's decarbonisation efforts. From testing an innovative idea, to tailored incubation programmes and commercial demonstrators, TEP offers varying levels of support dependent on the maturity of your business and technology readiness.

In partnership with the University of Birmingham (UoB) and Birmingham City Council, Tyseley Energy Park can access knowledge and resource that enable companies to develop sustainable, cutting-edge innovations at the park. Take advantage of the University's R&D expertise - and TEP's world-class industry networks - to scale and commercialise your product.

TEP's Business Incubation Hub assists climate-focused startups to develop their proposition and enter the market. It is also a key facilitator of the Climate Innovation Platform, an incubation programme designed by UoB and the Energy Systems Catapult.

**Contact Details**  
Fordrough, Hay Mills, Birmingham, B25 8DW  
w: tyseleyenergy.co.uk

## Sector Specialisms



"Tyseley Energy Park tackles the challenges of clean energy on multiple fronts, from hydrogen-fuelled vehicles to energy from waste and other renewable sources. It's a great demonstration of what can be achieved through effective partnership between industry and academia."

Sir Keir Starmer, Leader of the Labour Party





# COVENTRY

Surrounded by countryside, market towns and quaint villages, the city of Coventry offers a perfect location for businesses to grow and innovate in the UK.

An exciting city constantly evolving to meet the ever-changing demands of the 21st century, Coventry is home to some of the UK's leading R&D facilities for industries including CleanTech and Future Mobility. It also offers easy access to nearby Leamington Spa - one of the UK's largest games development clusters.



## UNIVERSITY OF WARWICK SCIENCE PARK



The University of Warwick Science Park is one of Europe's premier science parks, with a vibrant community of more than 145 innovation-driven start-ups, scale-ups and multi-national companies operating in the CleanTech, Creative & Digital Technologies and Future Mobility sectors. Around a quarter of the businesses here are international companies establishing their first UK base.

The UWSP offers high-spec, high-quality office and lab space in three locations across Coventry and Warwickshire, each with room for your business to establish, expand and grow.

You'll have access to a range of sector-specific business accelerators and incubators, such as the Deep Tech Innovation Centre, which equips entrepreneurs and start-ups with the tools they need to solve global challenges. In addition, you can access The Climb, an inspirational event space that allows cutting-edge businesses to attend - and stage - innovation-related events.

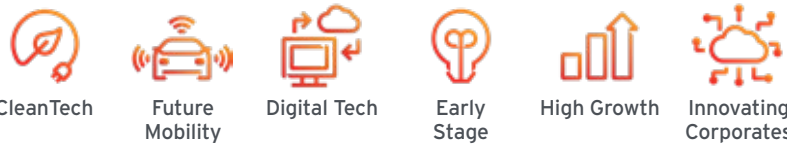
Businesses working in the Future Mobility sector will benefit from the hub's proximity to the National Automotive Innovation Centre, which brings together some of the brightest minds in the industry, while CleanTech firms can take advantage of links with WMG's Energy Innovation Centre - a national facility for battery research.

Participants in the Global Growth Programme can access the hub's network of business angels, as well as the Science Park's own in-house technical marketing agency for advice on market development and product launch. Of course, your business will also have access to the state-of-the-art facilities and talent pool of a renowned research-intensive university.

### Contact Details

Venture Centre, Sir William Lyons Road, Coventry, CV4 7EZ  
w: [www.warwick.ac.uk](http://www.warwick.ac.uk)

### Sector Specialisms



**"At Warwick we're ready to welcome tech-driven businesses to our vibrant community and help them gain maximum benefit from our innovation ecosystem."**

Mark Tock, Chief Operations Officer  
at University of Warwick Science Park

# WOLVERHAMPTON

Located in the northwest of the region, Wolverhampton is a historic city bursting with creativity, originality and entrepreneurial flair. Home to one of the world's oldest professional football teams, Wolverhampton Wanderers, the city was once a major centre for coal mining and steel production.

With an economy rooted in engineering, Wolverhampton is investing heavily in zero-carbon initiatives via its cutting-edge Green Innovation Corridor. From the University of Wolverhampton's £120m Springfield Campus to the National Centre for Sustainable Construction, the city is at the heart of the West Midlands' world-class low-carbon economy.



## UNIVERSITY OF WOLVERHAMPTON SCIENCE PARK



The University of Wolverhampton Science Park (UoWSP) is a thriving tech-business ecosystem that facilitates collaboration, growth and innovation. Businesses here regularly partner on joint ventures - sharing knowledge,

resources and exploring new business and supply chain opportunities to develop more efficient processes and advance their products and services.

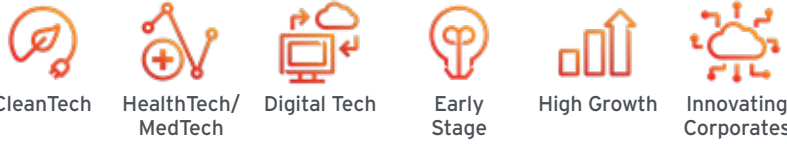
As part of the community, you'll have access to the National Brownfield Institute (NBI), a world-class research centre that, through innovation and partnership with the construction industry, is focusing on the practical application of future brownfield regeneration. The NBI hosts a range of technologies and facilities to support businesses working in the sector, including a state-of-the-art nine-metre Igloo immersive cylinder.

When it comes to supporting your growth, the area's leading business support organisation, the Black Country Chamber of Commerce, is co-located on site. The UoWSP also holds regular networking events and seminars that will connect your business to the University's valuable knowledge and research networks and world-class facilities.

### Contact Details

Glaisher Drive, Wolverhampton, WV10 9RU  
w: [www.wolverhamptonsp.co.uk](http://www.wolverhamptonsp.co.uk)

### Sector Specialisms



**"The specialist facilities at the Science Park are ideal for businesses like ours, giving us the opportunity to enhance our research and development activities. It also allows us to access a multitude of support channels and collaboration with like-minded businesses."**

Matt Eccles, Marketing Director at Tytek Group



# GLOBAL SUCCESS STORIES

Since the Global Growth Programme launched in 2022, 35 businesses have landed into the region creating over 500 jobs.



Leveraging cutting edge Virtual Reality developed at India's top engineering university (IIT Madras), Skillveri's platform provides training for high-precision skills in the engineering and manufacturing sectors.

**"With our target customers spread widely across England and Scotland, it made perfect sense to position ourselves in the West Midlands - right at the heart of the UK. As well as being extremely well connected to other major UK cities by road and rail, Birmingham was a much more cost-competitive option than the likes of London."**

**"Being part of the West Midlands Global Growth Programme gave us a real head-start on our UK growth journey. Having access to free desk space at Bruntwood SciTech - where we had dedicated consultancy and networking opportunities on our doorstep - has helped us to hit the ground running and thrive in the region from day one."**

Sabarinath C. Nair, CEO at Skillveri



Mind & Matter Technology is an education technology consulting business. The Global Growth Programme helped them to establish a base here and now they have ambitious expansion plans.

**"The support we've received from the West Midlands Global Growth Programme started before we even incorporated in the UK. Having done that, they've been very proactive in helping us network with other companies and in the West Midlands arena itself. I think they've delivered on everything."**

Sukhbinder Heer - CEO, Mind & Matter Technology



Bellwether Industries is a pioneering urban air mobility company, providing compatible solutions for accessible personal flight in cities.

**"The West Midlands' unique combination of an established manufacturing heritage and world-class strengths in emerging technologies made it the obvious location for us to test and scale our innovative eVTOL solutions."**

**The best thing about being part of the West Midlands Global Growth Programme was having around-the-clock access to bespoke consultancy, from our base at Bruntwood SciTech innovation hub. These conversations enabled us to quickly add value to our business model by identifying partnership and networking opportunities in the local ecosystem. A key highlight of the Programme was being invited to attend the Future Mobility event at the Commonwealth Games business conference, UK House, where we made valuable connections with local universities and key players in the global CleanTech industry."**

Kai-Tse Lin, Co-Founder at Bellwether Industries



TheDisposal.Co

The Disposal Company is India's first automated plastic and carbon offsetting climate action initiative. Attracted by the UK's commitment to no plastics by 2024, they joined the Global Growth Programme to help develop their strategy.

**"The support we've received is phenomenal. They've helped us register the company in the UK, understand taxes, and they've connected us to mentors and other businesses who can help us grow."**

Pakhi Sharma - Senior Commercial Analyst, Disposal Company UK



# ENJOY A BETTER QUALITY OF LIFE

**There's more to the West Midlands than just work. It's a fantastic place to live.**

Located in the heart of the UK, just 90 minutes from London, the West Midlands region is a combination of bustling cities, thriving town centres, ancient villages and unspoilt countryside.

Centuries of history can be seen across the region, in towns like Shakespeare's Stratford-upon-Avon or places like the Black Country Museum. We have world-class shopping experiences, such as Birmingham's Bullring, a globally diverse culinary sector, and more canals, public parks and green spaces than anywhere in Europe.

The West Midlands has some of the UK's best cultural, leisure, and sporting facilities, including the famous Edgbaston Cricket Ground and Belfry Golf Course. We're also home to Premier League football clubs Aston Villa and Wolverhampton Wanderers.

Compared to other parts of the UK, your money goes further here. The average house price is 60% cheaper than in London and rents are far less too. If you're bringing your family, you'll be pleased to know the area also has excellent schools, universities and healthcare facilities.

Our warm, welcoming nature has made the West Midlands one of the most diverse regions in Europe. You'll find people from 190 different countries living here.

Will you be next?



THE HIGHEST CONCENTRATION OF MICHELIN-STARRED RESTAURANTS IN THE UK



EXPLORE A THREE-CITY METROPOLITAN REGION



92% LOWER POPULATION DENSITY THAN LONDON, GIVING YOU MORE SPACE



EDUCATE YOUR CHILDREN AT ONE OF 400 'OUTSTANDING' SCHOOLS



60+ GALLERIES AND MUSEUMS TO EXPLORE A RICH CULTURAL HISTORY



# IS YOUR BUSINESS ELIGIBLE FOR THE GLOBAL GROWTH PROGRAMME?

To be eligible for selection, your business must meet the following entry requirements:

- A foreign owned business: a wholly owned subsidiary or branch of a non-UK company OR a UK company with least 10% of the shareholding held by a non-UK organisation.
- A technology-led business operating in one of the following qualifying sectors: Future Mobility, CleanTech, HealthTech or MedTech, Digital Technology (e.g. FinTech, EdTech).
- A clear UK strategy and plan: The business has researched the opportunity to expand in the UK that confirms the need to set up a new UK presence, along with a plan to deliver this.
- A clear intent to build a team in the West Midlands: You need to be prepared to deploy at least one member in the region at least five days per month throughout the programme, with a plan for up to three people to be present in the West Midlands within nine months and to recruit at least 10 local staff members within the West Midlands in three years.

Priority will be given to businesses with a credible business plan that have a strategic rationale for locating in the West Midlands, have the potential to create local employment and can benefit the local innovation ecosystem.



## REGISTER YOUR INTEREST NOW

If you're ready to accelerate your entry into the UK by taking your place at the heart of an innovation powerhouse that's affecting global change, register your interest today.







**WEST  
MIDLANDS**  
GROWTH COMPANY  
**Invest** in the West Midlands



[investwestmidlands.com](https://investwestmidlands.com)