

THE WEST MIDLANDS
ONE REGION, MANY WORLDS

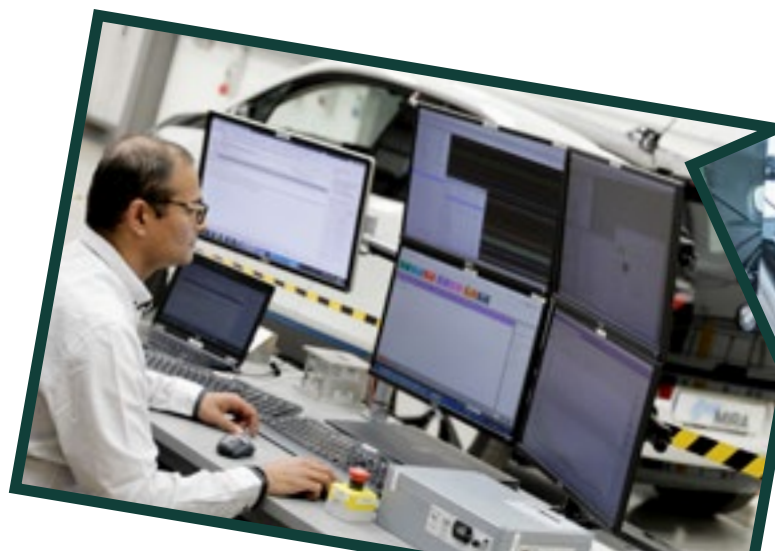


**WEST
MIDLANDS**
GROWTH COMPANY
Invest in the West Midlands

GLOBAL GROWTH PROGRAMME

FUTURE MOBILITY HUB

Accelerated UK market entry support
for science and technology businesses



Contents

| | |
|----|--|
| 02 | UK & West Midlands |
| 03 | West Midlands Growth Company |
| 04 | The Global Growth Programme |
| 06 | Future Mobility Hub |
| 07 | Automotive Testbed |
| 08 | Clean Transport Accelerator |
| 09 | Electrification |
| 10 | Rail Technology Testbed |
| 11 | Scaling Advanced Manufacturing |
| 13 | Your Springboard to International Success |
| 16 | World-Class Innovation Hubs |
| 22 | Global Success Stories |
| 24 | Enjoy a Better Quality of Life |
| 26 | Is your business eligible for the Global Growth Programme? |
| 27 | Register Now |

LAUNCH IN THE UK

A GLOBAL HUB FOR TECH INNOVATION

Home to the world's third largest tech sector, a globally renowned legal system and with a reputation for world-class R&D, the UK's proven track record of driving business growth and success is highly attractive for innovative international companies.

Combined with our highly accessible language, state-of-the-art digital infrastructure and unrivalled accessibility, pioneering international firms have everything they need to successfully launch and scale in a thriving UK market of over 60 million people.

Add to that our internationally recognised education system, which includes four of the world's top ten universities, and it's clear how the UK can help you realise your business ambitions.



LARGEST AIR TRANSPORT SYSTEM IN EUROPE, PROVIDING EASY ACCESS TO INTERNATIONAL MARKETS WORLDWIDE.



NO.1 LOCATION IN EUROPE FOR UNICORN COMPANIES.



25% CORPORATION TAX - ONE OF THE LOWEST IN THE G20.

SCALE IN THE WEST MIDLANDS

INNOVATION IS IN OUR DNA

The West Midlands is the UK's leading region for Foreign Direct Investment, recording the highest annual growth rate of all UK locations. We're working at pace to deliver on the UK Government's 'Science & Technology Superpower' ambitions.

Our region has the perfect combination of world-class research assets, specialist talent, committed public sector support and unique technological capabilities, making it the ideal destination for groundbreaking companies to thrive. Located at the heart of the UK, we're a three-city region comprising of Coventry, Wolverhampton and Birmingham, the UK's second city. We're sustained by a growing population of 4.3 million people and one of the youngest, most diverse talent pools in the UK, with 32% of residents under the age of 25.

Life would look very different without West Midlands' innovations. The pacemaker, the world's leading brain cancer drug and the world's first Ibuprofen patch were all developed here. Famed pioneers James Watt, Matthew Boulton, William Shakespeare, James Starley, John Cadbury, and J.R.R. Tolkien all hail from the region.



£108BN FULL-SERVICE ECONOMY



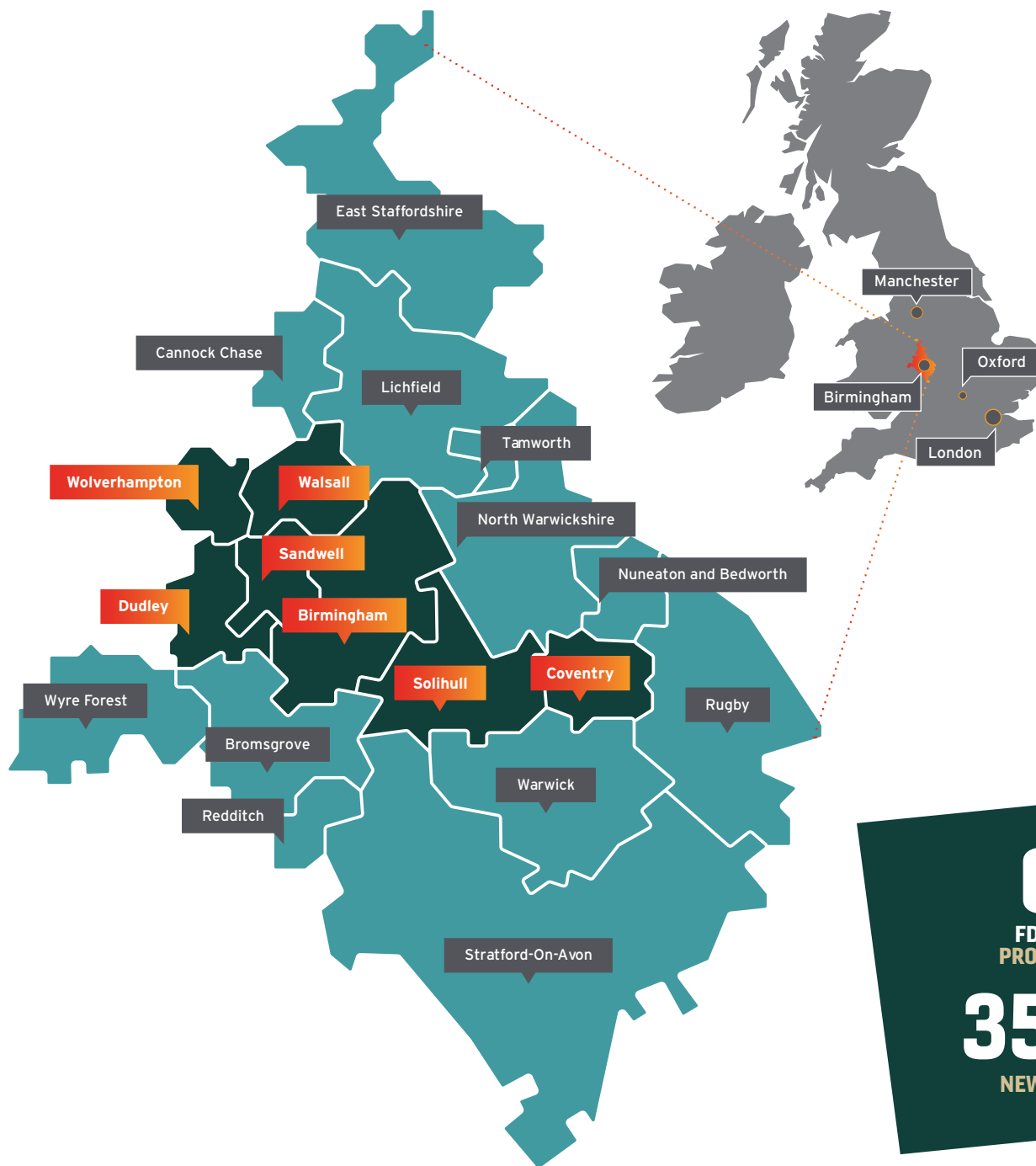
HS2 WILL CONNECT LONDON TO THE WEST MIDLANDS IN JUST 38 MINUTES



THE UK'S MOST ACCESSIBLE AIRPORT BY RAIL AND ROAD, WITH LINKS TO 400 GLOBAL DESTINATIONS



90% OF THE UK LIES WITHIN A FOUR-HOUR DRIVE-TIME, INCLUDING BRISTOL, CAMBRIDGE, OXFORD, LEEDS AND MANCHESTER



WORK WITH THE WEST MIDLANDS GROWTH COMPANY

The West Midlands Growth Company (WMGC) is the official Investment Promotion Agency for the West Midlands region.

Our specialist teams act as strategic partners and consultants to investing companies, ensuring they receive comprehensive support across their entire business plan to make their relocation, expansion and growth here successful.

We've helped start-ups, high-growth SMEs and global corporations, such as HSBC UK and Goldman Sachs, to set up operations in the region and maximise growth opportunities.

600
FDI INVESTMENT
PROJECTS SECURED
35,000
NEW JOBS CREATED



THE GLOBAL GROWTH PROGRAMME

THE ULTIMATE UK MARKET ENTRY SUPPORT

The Global Growth Programme is a unique, fully funded UK market entry offering, designed to help international companies invest, establish and scale rapidly. Spanning multiple industries, the Global Growth Programme provides a bespoke, nine-month package of support to ambitious companies at all stages of the development cycle.

We want to work with companies that share our vision to build world-class UK capabilities in CleanTech, Creative & Digital Technologies, Future Mobility and HealthTech: whether you're reinventing the energy grid, launching a new medical device or revolutionising the future of cybersecurity.

FOUR TECH SECTORS



CleanTech



**Digital
Tech**



**Future
Mobility**



**Health/
MedTech**



20

**SECTOR SPECIFIC
PROGRAMMES**

with access to



6

TOP UNIVERSITIES



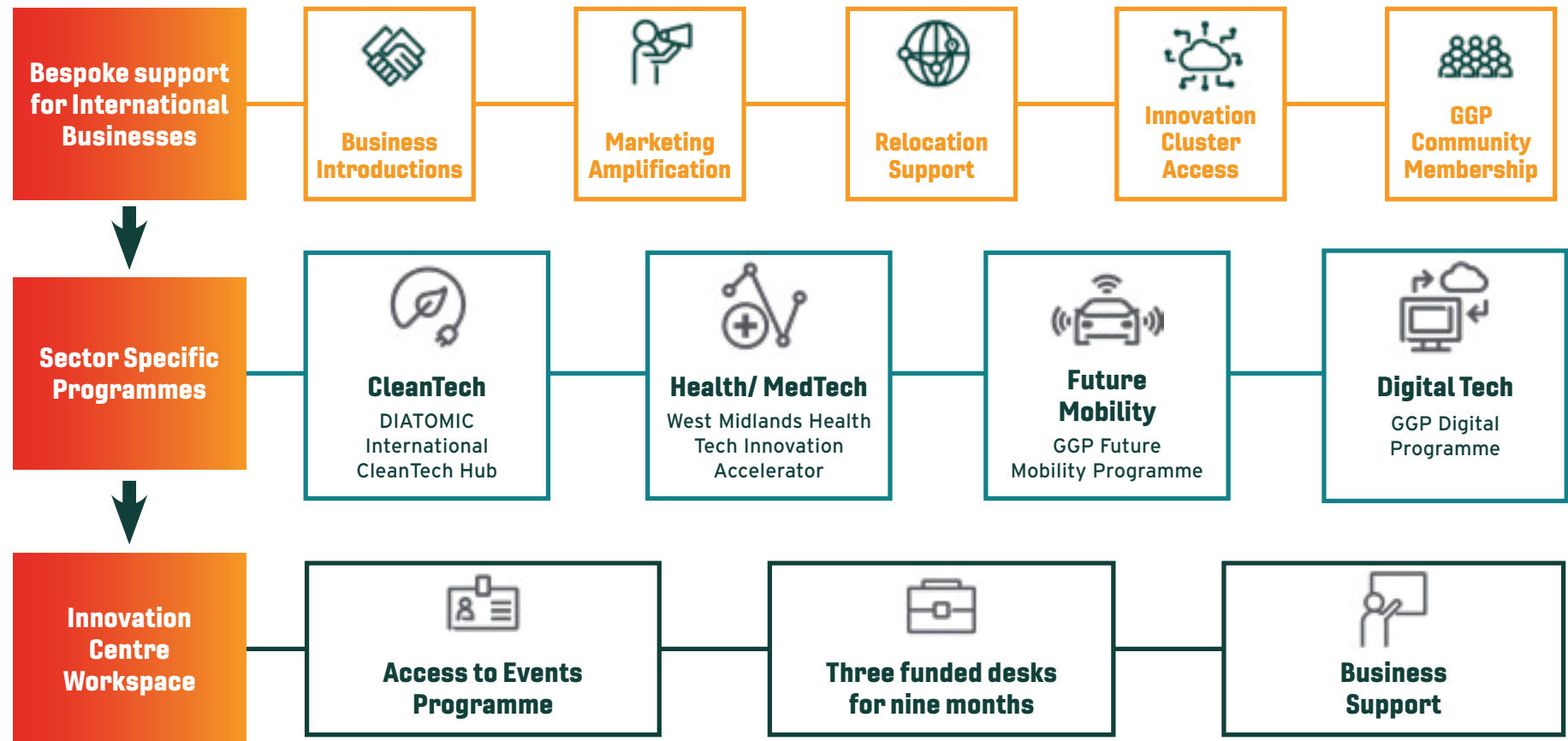
10

**INDUSTRY
NETWORKS**



15

**LEADING
RESEARCH
INSTITUTES**



ACCELERATE YOUR GROWTH WITH BESPOKE BUSINESS SUPPORT

The Global Growth Programme provides three layers of comprehensive value for innovative companies that includes bespoke business support to assist international expansion, access to sector specific innovation programmes, and nine months of sponsored workspace for up to three employees in one of six world-class innovation hubs across the region.

Through a dedicated account manager, you will receive support with establishing your UK operations and facilitated introductions to world-class R&D institutions, industry supply chains and talent providers.

Everything you need to pioneer innovative new products and supercharge your growth.

FUTURE MOBILITY HUB

With our strong heritage in automotive and aerospace manufacturing, the West Midlands is now at the forefront of pioneering developments in Future Mobility. Home to the UK's first Future Mobility Zone with 200 miles of viable, 5G-connected road testbed for connected and automated mobility technology, Europe's largest rail research group (the Birmingham Centre for Railway Research and Education) and the £130m UK Battery Industrialisation Centre, the region has everything you need to innovate the next generation of products and services.

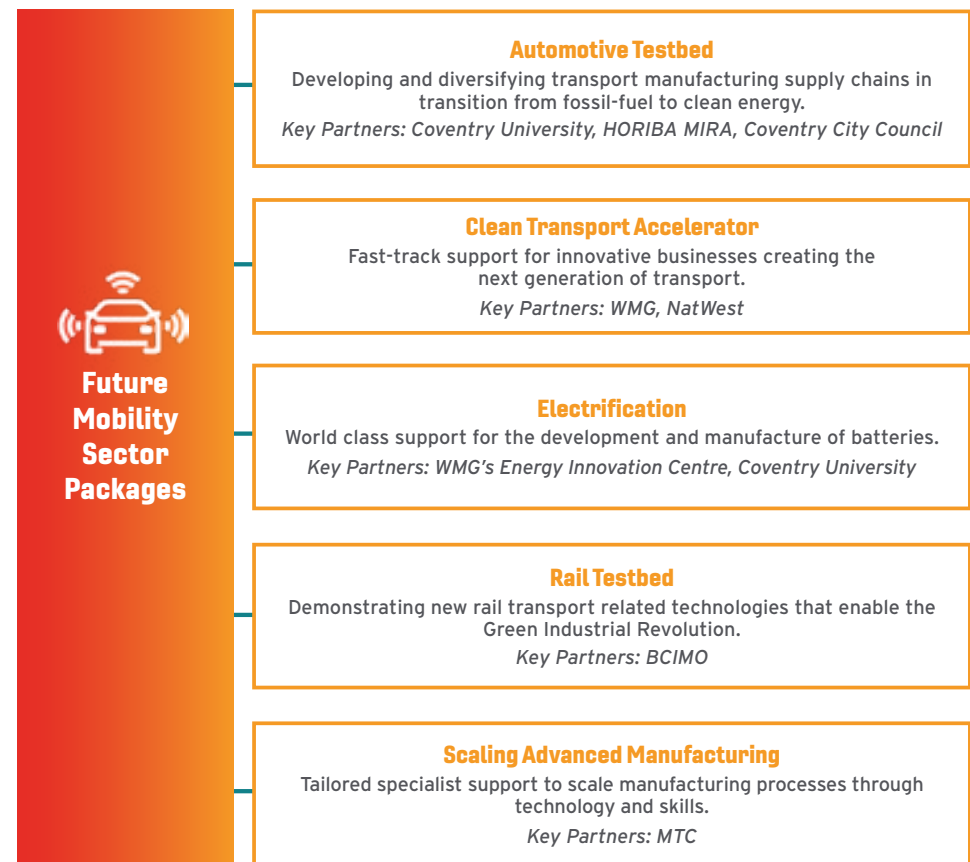
Major manufacturers like Aston Martin Lagonda, Jaguar Land Rover and Rolls Royce Aerospace are based here, along with a growing supply chain for net-zero carbon vehicle technology.

Plug into the Global Growth Programme's Future Mobility hub to take advantage of the region's world-class research facilities, mature manufacturing supply chain and unique UK connectivity to transform new technologies into commercially viable transport solutions.

SPECIALIST FUTURE MOBILITY SUPPORT PACKAGES

Carefully curated by a team of industry experts, the Global Growth Programme's Future Mobility hub consists of five sub-sector packages, each designed to offer bespoke, specialist industry support for companies operating within their respective fields.

Companies selected onto the programme can access industry and public sector networks, world-class R&D facilities, highly respected industry experts and unrivalled business support to successfully test, scale and commercialise exciting, game-changing transportation technologies.



*Nine months fully funded workspace. Access to research expertise and facilities may be funded, part funded or not funded. This is determined on a case-by-case basis.

AUTOMOTIVE TESTBED

As the world moves from internal combustion-powered vehicles to electrification, the West Midlands is pioneering next-generation vehicles and transport solutions.

The Global Growth Programme's Automotive testbed, delivered in partnership with the Clean Futures Innovation Accelerator, is the ideal platform for automotive companies transitioning from fossil fuels to clean energy. Our package of access to specialist engineering support, which includes world-leading research and development opportunities, comprises of:

- **Use of MIRA Technology Park**, the world's leading location for innovation in sustainable mobility. Develop, test and progress products to market using MIRA's state-of-the-art R&D infrastructure, as well as meet potential customers and collaborators via the park's 'Connect' event programme.
- **Free consultation** with Coventry University to discuss exciting opportunities to access their leading specialist research facilities, covering advanced manufacturing, autonomous vehicle testing, low carbon propulsion and vehicle design.
- **Access to the Clean Futures Catalyst** that comprises specialist industry workshops and masterclasses, skills development advice and networking events.
- **Municipality introductions and feedback** on product viability and application in the real-world environment from Coventry City Council.
- **Sponsored office and workshop facilities** for up to three desks at the University of Warwick Science Park, voted a top 5% European Innovation Hub, or any of the other five locations across the region.
- **Membership** of the University of Warwick Science Park community, consisting of more than 145 innovation-driven start-ups, scale-ups and multi-national companies. Participate in a programme of regular business and networking events, while you can also receive access to their exclusive My Innovation platform.
- **Facilitated introductions** to the broader West Midlands Future Mobility ecosystem.
- **Dedicated business support** based on your company's individual needs. Use monthly meetings with a specialist business advisor to discuss assistance with commercial introductions, grant funding, professional advice, recruitment and securing local investment.



MIRA Technology Park

Horiba MIRA's Technology Park is Europe's leading mobility R&D location for developing the latest automotive technologies including autonomous vehicles. Test environments include replica city test tracks, high-speed dynamic test areas, campus deployment and links to public test infrastructure.



UNIVERSITY OF WARWICK
SCIENCE PARK



World-class
R&D Facilities



Specialist
Demonstrator
Support



Expert
Manufacturing
Support



Innovation
Centre
Workspace



Community
& Business
Support



Municipal
Introductions

*Nine months fully funded workspace. Access to research expertise and facilities may be funded, part funded or not funded. This is determined on a case-by-case basis.

CLEAN TRANSPORT ACCELERATOR

The Global Growth Programme has partnered with Warwick Manufacturing Group and NatWest to offer companies participating in our programme the opportunity to apply for the Clean Transport Accelerator.

This exciting initiative supports businesses in the Future Mobility industry to develop products and services that will help the UK achieve its net zero ambitions. Aimed at companies creating the next generation of transport, it offers support to fast-track their innovations, as well as access to experts in clean transportation and equipment.

In addition to the Global Growth Programme's nine-month package of fully funded innovation workspace and business support (see below), participants can simultaneously apply to the Clean Transport Accelerator:

- **Six months of specialist support from WMG and NatWest Bank**, comprised of:
 - Access to state-of-the-art manufacturing equipment to be used to develop and test ideas.
 - 1-1 coaching and mentoring delivered by experienced accelerator managers.
 - Access to a wide network of stakeholders spanning academia, business and government.
 - Valuable thought-leadership through bespoke virtual and in-person events.

As a Global Growth Programme Participant, companies gain:

- **Sponsored office and workshop facilities** for up to three desks at the University of Warwick Science Park, voted a top 5% European Innovation Hub, or any of the other five locations across the region.
- **Membership** of the University of Warwick Science Park community, consisting of more than 145 innovation-driven start-ups, scale-ups and multi-national companies. Participate in a programme of regular business and networking events, while you can also receive access to their exclusive My Innovation platform.
- **Facilitated introductions** to the broader West Midlands Future Mobility ecosystem.
- **Dedicated business support** based on your company's individual needs. Use monthly meetings with a specialist business advisor to discuss assistance with commercial introductions, grant funding, professional advice, recruitment and securing local investment.

Please note, to qualify, a UK registered business must be developing products to decarbonise transport and qualify for a Natwest bank account. The Clean Transport Programme is subject to separate application and acceptance.

Warwick Manufacturing Group

Warwick Manufacturing Group (WMG) is a leading international role model for successful collaboration between academia and the public and private sectors. Accelerating and de-risking innovation for industry, it drives cutting edge R&D to develop the brightest ideas and talent to shape our future. It is both an academic department of the University of Warwick, and one of the UK's High Value Manufacturing Catapult (HVMC) centres.



Business Growth
Accelerator
Programme



Specialist
Academic R&D
Support



Innovation
Centre
Workspace



Community
& Business
Support

*Nine months fully funded workspace. Access to research expertise and facilities may be funded, part funded or not funded. This is determined on a case-by-case basis.

ELECTRIFICATION

Home to a close-knit network of world leading electrification R&D facilities, including the £130m UK Battery Industrialisation Centre and the newly announced Greenpower Park in Coventry (the only approved UK site for a large-scale battery production facility capacity up to 60 GWh), the West Midlands is at the forefront of cutting-edge electrification technologies.

Now your company can take advantage of world-class support for the development and manufacture of state-of-the-art aircraft and vehicle batteries via the Global Growth Programme's electrification package, which consists of:

- **Consultations** with industry experts from both WMG's Energy Innovation Centre and Coventry University's Cell Prototyping Centre to identify pathways for research support and opportunities for funding and co-funding further development.
- **Access** to specialist expertise to scale up battery manufacturing with support from world-leading organisations such as the UK's Manufacturing Technology Centre (MTC) and the UK Battery Industrialisation Centre (UKBIC), a £130m national battery manufacturing scale-up facility, including manufacturing tech and skills support.
- **Sponsored office and workshop facilities** for up to three desks at the University of Warwick Science Park, voted a top 5% European Innovation Hub, or any of the other five locations across the region.
- **Membership** of the University of Warwick Science Park community, consisting of more than 145 innovation-driven start-ups, scale-ups and multi-national companies. Participate in a programme of regular business and networking events, while you can also receive access to their exclusive My Innovation platform.
- **Facilitated introductions** to the West Midlands' broader electrification ecosystem through memberships of the Sustainability West Midlands (SWM) industry organisation and Tyseley Energy Park's CleanTech community.
- **Dedicated business support** based on your company's individual needs. Use monthly meetings with a specialist business advisor to receive assistance with commercial introductions, grant funding, professional advice, recruitment and securing local investment.

*Nine months fully funded workspace. Access to research expertise and facilities may be funded, part funded or not funded. This is determined on a case-by-case basis.



Warwick Energy Innovation Centre

WMG's Energy Innovation Centre is a national facility for battery research. Access world-leading R&D expertise across the entire process from materials and electrochemistry through to application integration and recycling / re-use.



Academic
Support



Expert
Manufacturing
Support



Innovation
Centre
Workspace



Community
& Business
Support

RAIL TECHNOLOGY TESTBED

The West Midlands has a proud rail heritage in the heart of England. With the arrival of High-Speed 2 and the £1.75bn Midlands Rail Hub, the West Midlands is set to retain its position as the fulcrum of the UK rail industry.

With the Global Growth Programme's Rail Technology Testbed, your company can benefit from expert engineering support to demonstrate cutting-edge rail technologies, comprising:

- **Free consultation with the BCIMO in Dudley**, to scope access to their portfolio of specialist rail testbed facilities, including the Rail Development & Test Site, their engineering laboratories and state-of-the-art equipment.
- **Complementary access to the Rail Commercial Investment Hub**; a specialist investment platform that brings together investors with innovative, rail-related businesses.
- **Free consultation** with Coventry University to discuss exciting opportunities to access specialist R&D facilities in advanced manufacturing and low carbon propulsion.
- **Sponsored office and workshop facilities** for up to three desks at the University of Wolverhampton Science Park, or any of the other five locations across the region.
- **Membership** of the University of Wolverhampton Science Park community, consisting of more than 100 innovation-driven start-ups, scale-ups and multi-national companies. Participate in a programme of regular business and networking events.
- **Facilitated introductions** to the broader West Midlands rail ecosystem.
- **Dedicated business support** based on your company's individual needs. Use monthly meetings with a specialist business advisor to discuss assistance with commercial introductions, grant funding, professional advice, recruitment and securing local investment.

Very Light Rail National Innovation Centre

Operated by the BCIMO, the £32m Very Light Rail National Innovation Centre (VLRNIC) is a unique, world-class centre for rail innovation based in Dudley in the West Midlands.



Academic Support



Specialist Demonstrator Support



Innovation Centre Workspace



Community & Business Support

*Nine months fully funded workspace. Access to research expertise and facilities may be funded, part funded or not funded. This is determined on a case-by-case basis.

SCALING ADVANCED MANUFACTURING

Whether it's our place at the heart of the UK's aerospace, automotive and rail clusters or our expertise in industry 4.0, the West Midlands is one of the most well-connected, innovative and advanced manufacturing hubs in the world.

Our Scaling Advanced Manufacturing module is designed for transportation and mobility companies seeking to scale-up their manufacturing processes through specialist support with technology and skills. With the help of experts from the Manufacturing Technology Centre (MTC) and Coventry University's Institute for Advanced Manufacturing & Engineering (AME), your business could evolve its manufacturing capability from bench to mass-market production. This consists of:

- **An initial discovery workshop with experts from the Manufacturing Technology Centre**, including a free consultation and tour of the organisation's facilities.
- **Bespoke proposal tailored** by MTC experts detailing their services and how they can help scale your production capability.
- **Free consultation** to discuss collaboration opportunities with Coventry University's Institute for Advanced Manufacturing & Engineering (AME), an international centre of engineering and manufacturing excellence, and the base for a sustained programme of innovative teaching and learning, product development and research activity.
- **Sponsored office and workshop facilities** for up to three desks at the University of Warwick Science Park, voted a top 5% European Innovation Hub, or any of the other five locations across the region.
- **Membership** of the University of Warwick Science Park community, consisting of more than 145 innovation-driven start-ups, scale-ups and multi-national companies. Participate in a programme of regular business and networking events, while you can also receive access to their exclusive My Innovation platform.
- **Facilitated introductions** to the broader West Midlands Future Mobility ecosystem.
- **Dedicated business support** based on your company's individual needs. Use monthly meetings with a specialist business advisor to discuss assistance with commercial introductions, grant funding, professional advice, recruitment and securing local investment.

*Nine months fully funded workspace. Access to research expertise and facilities may be funded, part funded or not funded. This is determined on a case-by-case basis.

Manufacturing Technology Centre

The UK Manufacturing Technology Centre (MTC) is an independent Research & Technology Organisation (RTO) that bridges the gap between academia and industry to prove innovative manufacturing processes and technologies in an agile environment.



mtc where progress happens

Coventry University 



UNIVERSITY OF WARWICK
SCIENCE PARK



Academic
Support



Expert
Manufacturing
Support



Innovation
Centre
Workspace



Community
& Business
Support



YOUR SPRINGBOARD TO INTERNATIONAL SUCCESS

The Global Growth Programme provides comprehensive support enabling companies to swiftly launch and scale UK operations.

FOUNDERS & EARLY-STAGE BUSINESSES

Our programme offers expert support in setting up and testing your proposition and business model. We'll help with securing valuable seed funding. Take advantage of high spec hot-desking and co-working spaces, benefit from tailored business advice, access a network of unique research data and impressive facilities and get support with taking the necessary steps to protect your Intellectual Property.

HIGH GROWTH BUSINESSES

Receive specialist assistance setting up your UK subsidiary and implementing your market entry plan, along with access to collaboration opportunities with an unrivalled network of innovation partners.

We'll help you validate your 'go to market' approach for the United Kingdom and Europe, as well as build local business contacts, enabling you to develop a high-quality commercial pipeline.

You'll also benefit from strategic relationships with businesses and institutions that can offer access to skills, talent, innovative research and investment. All vital to driving business success.

CORPORATE INNOVATION

De-risk and develop your innovation strategy using our programme to advance and test new products and services, launch new ventures and spin outs, and set up new commercial collaborations.

The Global Growth Programme connects your business directly into local entrepreneurial networks and leading research institutions that can support transformation in your business.

We'll also connect you to sources of graduate and postgraduate talent as well as help to relocate your employees to the region.



BESPOKE SUPPORT DESIGNED TO MEET THE NEEDS OF YOUR BUSINESS

Every business is different, with its own unique set of challenges and requirements. The Global Growth Programme's suite of support is designed to meet a range of needs specific to your business size or sector.

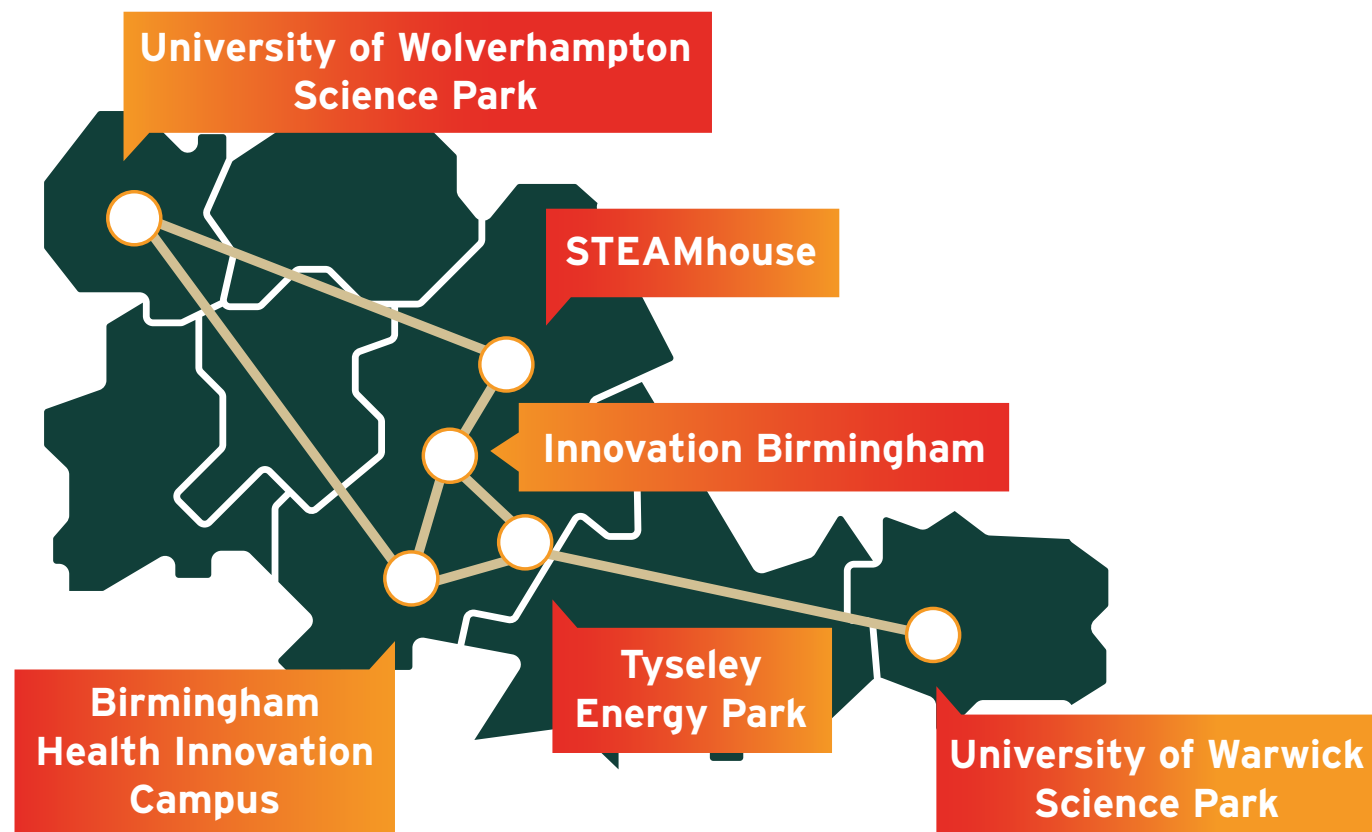
| | | | EARLY-STAGE BUSINESS | HIGH-GROWTH BUSINESS | CORPORATIONS |
|--------------------------|--|--|----------------------|----------------------|--------------|
| Relocation | Setting up a UK entity/subsidiary | Providing specialist legal and tax advice to set up your UK company entity | ● | ● | |
| | Setting up a new Global HQ in the UK | Providing specialist legal and tax advice to move your existing headquarters to the UK | ● | ● | |
| | Team orientation | Support with relocation and adapting to living and working in the UK | ● | ● | ● |
| | Community Support | Being part of a peer group community of other international tech businesses | ● | ● | ● |
| Commercial Launch | Guidance in shaping the proposition & business model | Helping you define how you will commercialise your technology | ● | | |
| | Market testing and entry | Helping you to validate the market for your products and services in the UK | ● | ● | ● |
| | Commercial traction | Commercial introductions into UK-West Midlands business networks | ● | ● | ● |
| | Corporate collaborations | Linking corporates to entrepreneurial companies with innovative products and services | | ● | ● |
| | Securing IP Protection | Access to intellectual property specialists to advise on patents and copyright, both in the UK and internationally | ● | ● | |

| | | | EARLY-STAGE BUSINESS | HIGH-GROWTH BUSINESS | CORPORATIONS |
|---|--|---|----------------------|----------------------|--------------|
| Funding | Preparing for and accessing seed funding | Helping you prepare to raise your initial funding and making introductions to local angel and early-stage funding networks | ● | | |
| | Preparing for and accessing growth funding | Helping you prepare to raise Series A+ funding and making introductions to the local VCs and investment community | | ● | |
| Research & Product Development | Accessing specialist research facilities | Access to leading UK facilities to accelerate the development, testing and demonstration of your products | ● | ● | ● |
| | Accessing specialist research and technical expertise | Providing direct links to world class universities and research institutes in the region | ● | ● | ● |
| | Access to regulatory support | Access to specialists in regulation to assist you in securing UK accreditation | ● | ● | ● |
| | Access to clinical support | Access to leading hospitals, clinicians and the NHS | ● | ● | ● |
| Talent | Support with talent recruitment | Connections to specialist headhunting and recruitment firms | ● | ● | ● |
| | Accessing student placements and graduates | Connections to placements and graduate recruitment in the local universities | ● | ● | ● |
| Profile building | In-market communications | Amplification of your company communications in the West Midlands and broader UK market | ● | ● | |
| Office Space | Fully funded desk space within an innovation community | Three desks for nine months within a choice of Innovation Districts across the West Midlands offering regular networking events | ● | ● | ● |

THRIVE IN OUR WORLD-CLASS INNOVATION HUBS

The Global Growth Programme brings together specialist technology hubs from across the region to offer you access to exceptional expertise and opportunities. Located across Birmingham, Coventry and Wolverhampton, each state-of-the-art facility is a centre of innovation and cutting-edge research, where CleanTech, Future Mobility, MedTech and Creative & Digital Tech firms collaborate and thrive. They also act as a gateway to additional West Midlands' R&D institutions and business accelerators.

ACCESS THE WHOLE REGION
SIX LANDING HUBS



BIRMINGHAM

The largest UK city outside London, Birmingham is constantly evolving. Once an 18th century manufacturing powerhouse, the city is now a world-class centre of business, culture, education and technology that is using a long tradition of innovation to shape the future. A fascinating hub of diverse cultures, fine cuisine and contemporary living, Birmingham is an excellent choice for business and pleasure.

The Global Growth Programme offers access to three innovation hubs across the city.

INNOVATION BIRMINGHAM

bruntwood
SciTech

In the heart of Birmingham's city centre Knowledge Quarter is Bruntwood SciTech's Innovation Birmingham, a cutting-edge digital tech campus with a vibrant community of over 120 forward-thinking tech companies.

It has close links to neighbouring Aston and Birmingham City Universities and their world-class specialist institutes and facilities in areas including transport digitisation, bioenergy, cyber-forensics, AI data science and software development. Innovation Birmingham offers unique collaboration opportunities, opening doors for product development, funding, talent and commercial growth.

Over the past decade, the hub has helped more than 1500 companies grow their business in the region's tech industry.

Contact Details

Innovation Birmingham, Holt Street, Birmingham, B7 4BP

w: bruntwood.co.uk/our-locations/birmingham/innovation-birmingham/

Sector Specialisms



CleanTech



HealthTech/
MedTech



Digital Tech



Early
Stage



High Growth



Innovating
Corporates



"This is absolutely the place to be for tech. Innovation Birmingham has got a track record helping businesses not just scale, but scale successfully, scale sustainably and have access to investment, business support and skills that would otherwise be really hard to come by."

Yiannis Maos MBE, CEO at TechWM

BIRMINGHAM HEALTH INNOVATION CAMPUS

From early 2025, the new Birmingham Health Innovation Campus (BHIC) will offer premium lab and office space in the heart of a critical cluster of health excellence. Delivered through a long-term collaboration between the University of Birmingham and Bruntwood SciTech, BHIC opens pathways into valuable networks for research, funding, product development and collaboration in key areas of healthcare innovation including Biopharma, MedTech, Precision Medicine and Genomics.

BHIC is the home of the University of Birmingham's Precision Health Technologies Accelerator (PHTA) which provides access to the expertise, resources and infrastructure required to enable translation of healthcare innovations - including phase one to three clinical trials and real-world evaluation.

The campus is also home to the new £14m West Midlands HealthTech Innovation Accelerator (WMHTIA), which provides unprecedented access to expert infrastructure and product development support at every stage of the innovation process, including prototyping, regulation, clinical trials and evaluation.

Contact Details

Aston Webb Boulevard, Selly Oak, Birmingham, B29 6SJ

w: bruntwood.co.uk/our-locations/birmingham/birmingham-health-innovation-campus/

Sector Specialisms



HealthTech/
MedTech



Early
Stage



High Growth



Innovating
Corporates



"I think the phrase 'unexpected ways' sums up the STEAMhouse. If you work in an environment where there are other business owners and amazing staff, you invariably find that you get help in ways that you didn't even know that you needed."

John Morse-Brown, Chief Operating Officer
at Pigeon Posted

STEAMHOUSE



Powered by
BIRMINGHAM CITY
University

Located in Birmingham's Knowledge Quarter, STEAMhouse provides a wealth of support to help your digital tech business launch, sustain and scale. The hub is home to exciting start-ups and scale-ups in sectors ranging from software development and digital marketing to blockchain and cybersecurity.

With over 120,000ft² of high-quality space located over five floors, STEAMhouse offers state-of-the-art production space and workshops with access to immersive AR/VR technology and a comprehensive business support package.

Alongside initial onboarding and in-depth client needs analysis to implementing the support required to grow your business, STEAMhouse offers a superb programme of business workshops, mentoring and networking events. The hub also hosts a 72-desk business incubator, where entrepreneurs and fledgling businesses can get all the support and knowledge they need to hit the ground running.

Contact Details

Belmont Row, Birmingham, B4 7RQ

w: steamhouse.org.uk/

Sector Specialisms



CleanTech



Digital Tech



Early
Stage



High Growth



Innovating
Corporates



TYSELEY ENERGY PARK

Tyseley Energy Park (TEP) is located at the heart of Birmingham Green Energy Innovation District in the east of the city. With its mission to transform clean energy innovation in Birmingham and the West Midlands by stimulating and demonstrating new technologies and turning them into fully commercially viable energy systems, TEP will contribute to the West Midlands' commitments to become a net zero carbon economy by 2041.

Within the park is the University of Birmingham's Energy Innovation Centre (BEIC), a low and zero carbon refuelling station, a biomass power station, a hydrogen electrolyser, and the National Centre for the Decarbonisation of Heat, which is due to be completed in 2026.

TEP has created an environment where heat and power, and waste to value focused businesses can receive support and collaboration opportunities in a location that is a key focus of Birmingham's decarbonisation efforts. From testing an innovative idea, to tailored incubation programmes and commercial demonstrators, TEP offers varying levels of support dependent on the maturity of your business and technology readiness.

In partnership with the University of Birmingham (UoB) and Birmingham City Council, Tyseley Energy Park can access knowledge and resource that enable companies to develop sustainable, cutting-edge innovations at the park. Take advantage of the University's R&D expertise - and TEP's world-class industry networks - to scale and commercialise your product.

TEP's Business Incubation Hub assists climate-focused startups to develop their proposition and enter the market. It is also a key facilitator of the Climate Innovation Platform, an incubation programme designed by UoB and the Energy Systems Catapult.

Contact Details

Fordrough, Hay Mills, Birmingham, B25 8DW

w: tyseleyenergy.co.uk

Sector Specialisms



CleanTech



Future
Mobility



Digital Tech



Early
Stage



High Growth



Innovating
Corporates



"Tyseley Energy Park tackles the challenges of clean energy on multiple fronts, from hydrogen-fuelled vehicles to energy from waste and other renewable sources. It's a great demonstration of what can be achieved through effective partnership between industry and academia."

Sir Keir Starmer, Leader of the Labour Party

COVENTRY

Surrounded by countryside, market towns and quaint villages, the city of Coventry offers a perfect location for businesses to grow and innovate in the UK.

An exciting city constantly evolving to meet the ever-changing demands of the 21st century, Coventry is home to some of the UK's leading R&D facilities for industries including CleanTech and Future Mobility. It also offers easy access to nearby Leamington Spa - one of the UK's largest games development clusters.



UNIVERSITY OF WARWICK SCIENCE PARK



The University of Warwick Science Park is one of Europe's premier science parks, with a vibrant community of more than 145 innovation-driven start-ups, scale-ups and multi-national companies operating in the CleanTech, Creative & Digital Technologies and Future Mobility sectors. Around a quarter of the businesses here are international companies establishing their first UK base.

The UWSP offers high-spec, high-quality office and lab space in three locations across Coventry and Warwickshire, each with room for your business to establish, expand and grow.

You'll have access to a range of sector-specific business accelerators and incubators, such as the Deep Tech Innovation Centre, which equips entrepreneurs and start-ups with the tools they need to solve global challenges. In addition, you can access The Climb, an inspirational event space that allows cutting-edge businesses to attend - and stage - innovation-related events.

Businesses working in the Future Mobility sector will benefit from the hub's proximity to the National Automotive Innovation Centre, which brings together some of the brightest minds in the industry, while CleanTech firms can take advantage of links with WMG's Energy Innovation Centre - a national facility for battery research.

Participants in the Global Growth Programme can access the hub's network of business angels, as well as the Science Park's own in-house technical marketing agency for advice on market development and product launch. Of course, your business will also have access to the state-of-the-art facilities and talent pool of a renowned research-intensive university.

Contact Details

Venture Centre, Sir William Lyons Road, Coventry, CV4 7EZ

w: www.warwick.ac.uk

Sector Specialisms



CleanTech



Future
Mobility



Digital Tech



Early
Stage



High Growth



Innovating
Corporates

"At Warwick we're ready to welcome tech-driven businesses to our vibrant community and help them gain maximum benefit from our innovation ecosystem."

Mark Tock, Chief Operations Officer
at University of Warwick Science Park

WOLVERHAMPTON

Located in the northwest of the region, Wolverhampton is a historic city bursting with creativity, originality and entrepreneurial flair. Home to one of the world's oldest professional football teams, Wolverhampton Wanderers, the city was once a major centre for coal mining and steel production.

With an economy rooted in engineering, Wolverhampton is investing heavily in zero-carbon initiatives via its cutting-edge Green Innovation Corridor. From the University of Wolverhampton's £120m Springfield Campus to the National Centre for Sustainable Construction, the city is at the heart of the West Midlands' world-class low-carbon economy.

UNIVERSITY OF WOLVERHAMPTON SCIENCE PARK



The University of Wolverhampton Science Park (UoWSP) is a thriving tech-business ecosystem that facilitates collaboration, growth and innovation. Businesses here regularly partner on joint ventures – sharing knowledge,

resources and exploring new business and supply chain opportunities to develop more efficient processes and advance their products and services.

As part of the community, you'll have access to the National Brownfield Institute (NBI), a world-class research centre that, through innovation and partnership with the construction industry, is focusing on the practical application of future brownfield regeneration. The NBI hosts a range of technologies and facilities to support businesses working in the sector, including a state-of-the-art nine-metre Igloo immersive cylinder.

When it comes to supporting your growth, the area's leading business support organisation, the Black Country Chamber of Commerce, is co-located on site. The UoWSP also holds regular networking events and seminars that will connect your business to the University's valuable knowledge and research networks and world-class facilities.



Contact Details

Glaisher Drive, Wolverhampton, WV10 9RU

w: www.wolverhamptonsp.co.uk

Sector Specialisms



CleanTech



HealthTech/
MedTech



Digital Tech



Early
Stage



High Growth



Innovating
Corporates

"The specialist facilities at the Science Park are ideal for businesses like ours, giving us the opportunity to enhance our research and development activities. It also allows us to access a multitude of support channels and collaboration with like-minded businesses."

Matt Eccles, Marketing Director at Tytek Group

GLOBAL SUCCESS STORIES

Since the Global Growth Programme launched in 2022, 35 businesses have landed into the region creating over 500 jobs.



Leveraging cutting edge Virtual Reality developed at India's top engineering university (IIT Madras), Skillveri's platform provides training for high-precision skills in the engineering and manufacturing sectors.

"With our target customers spread widely across England and Scotland, it made perfect sense to position ourselves in the West Midlands - right at the heart of the UK. As well as being extremely well connected to other major UK cities by road and rail, Birmingham was a much more cost-competitive option than the likes of London."

"Being part of the West Midlands Global Growth Programme gave us a real head-start on our UK growth journey. Having access to free desk space at Bruntwood SciTech - where we had dedicated consultancy and networking opportunities on our doorstep - has helped us to hit the ground running and thrive in the region from day one."

Sabarinath C. Nair, CEO at Skillveri



Mind & Matter Technology is an education technology consulting business. The Global Growth Programme helped them to establish a base here and now they have ambitious expansion plans.

"The support we've received from the West Midlands Global Growth Programme started before we even incorporated in the UK. Having done that, they've been very proactive in helping us network with other companies and in the West Midlands arena itself. I think they've delivered on everything."

Sukhbinder Heer - CEO, Mind & Matter Technology





Bellwether Industries is a pioneering urban air mobility company, providing compatible solutions for accessible personal flight in cities.

“The West Midlands’ unique combination of an established manufacturing heritage and world-class strengths in emerging technologies made it the obvious location for us to test and scale our innovative eVTOL solutions.

The best thing about being part of the West Midlands Global Growth Programme was having around-the-clock access to bespoke consultancy, from our base at Bruntwood SciTech innovation hub. These conversations enabled us to quickly add value to our business model by identifying partnership and networking opportunities in the local ecosystem. A key highlight of the Programme was being invited to attend the Future Mobility event at the Commonwealth Games business conference, UK House, where we made valuable connections with local universities and key players in the global CleanTech industry.”

Kai-Tse Lin, Co-Founder at Bellwether Industries



TheDisposal.Co

The Disposal Company is India’s first automated plastic and carbon offsetting climate action initiative. Attracted by the UK’s commitment to no plastics by 2024, they joined the Global Growth Programme to help develop their strategy.

“The support we’ve received is phenomenal. They’ve helped us register the company in the UK, understand taxes, and they’ve connected us to mentors and other businesses who can help us grow.”

Pakhi Sharma - Senior Commercial Analyst, Disposal Company UK



ENJOY A BETTER QUALITY OF LIFE

There's more to the West Midlands than just work. It's a fantastic place to live.

Located in the heart of the UK, just 90 minutes from London, the West Midlands region is a combination of bustling cities, thriving town centres, ancient villages and unspoilt countryside.

Centuries of history can be seen across the region, in towns like Shakespeare's Stratford-upon-Avon or places like the Black Country Museum. We have world-class shopping experiences, such as Birmingham's Bullring, a globally diverse culinary sector, and more canals, public parks and green spaces than anywhere in Europe.

The West Midlands has some of the UK's best cultural, leisure, and sporting facilities, including the famous Edgbaston Cricket Ground and Belfry Golf Course. We're also home to Premier League football clubs Aston Villa and Wolverhampton Wanderers.

Compared to other parts of the UK, your money goes further here. The average house price is 60% cheaper than in London and rents are far less too. If you're bringing your family, you'll be pleased to know the area also has excellent schools, universities and healthcare facilities.

Our warm, welcoming nature has made the West Midlands one of the most diverse regions in Europe. You'll find people from 190 different countries living here.

Will you be next?





**THE HIGHEST
CONCENTRATION OF
MICHELIN-STARRED
RESTAURANTS IN
THE UK**



**EXPLORE A THREE-CITY
METROPOLITAN REGION**



**92% LOWER
POPULATION DENSITY
THAN LONDON, GIVING
YOU MORE SPACE**



**EDUCATE YOUR
CHILDREN AT ONE OF 400
'OUTSTANDING' SCHOOLS**



**60+ GALLERIES AND
MUSEUMS TO EXPLORE A
RICH CULTURAL HISTORY**



IS YOUR BUSINESS ELIGIBLE FOR THE GLOBAL GROWTH PROGRAMME?

To be eligible for selection, your business must meet the following entry requirements:

- A foreign owned business: a wholly owned subsidiary or branch of a non-UK company OR a UK company with least 10% of the shareholding held by a non-UK organisation.
- A technology-led business operating in one of the following qualifying sectors: Future Mobility, CleanTech, HealthTech or MedTech, Digital Technology (e.g. FinTech, EdTech).
- A clear UK strategy and plan: The business has researched the opportunity to expand in the UK that confirms the need to set up a new UK presence, along with a plan to deliver this.
- A clear intent to build a team in the West Midlands: You need to be prepared to deploy at least one member in the region at least five days per month throughout the programme, with a plan for up to three people to be present in the West Midlands within nine months and to recruit at least 10 local staff members within the West Midlands in three years.

Priority will be given to businesses with a credible business plan that have a strategic rationale for locating in the West Midlands, have the potential to create local employment and can benefit the local innovation ecosystem.





REGISTER YOUR INTEREST NOW

If you're ready to accelerate your entry into the UK by taking your place at the heart of an innovation powerhouse that's affecting global change, register your interest today.





**WEST
MIDLANDS**
GROWTH COMPANY
Invest in the West Midlands



investwestmidlands.com