

THE WEST MIDLANDS
ONE REGION, MANY WORLDS



**WEST
MIDLANDS**
GROWTH COMPANY
Invest in the West Midlands

GLOBAL GROWTH PROGRAMME

HEALTH AND MEDTECH HUB

Accelerated UK market entry support
for science and technology businesses



 **wmhtia**

Contents

02 UK & West Midlands
03 West Midlands Growth Company
04 The Global Growth Programme
06 Health and MedTech Hub
07 West Midlands Health Tech Innovation Accelerator (WMHTIA)
08 Plug and Play Health Hub
09 Precision Health Technologies Accelerator (PHTA)
10 Scaling Advanced Manufacturing
11 Access to the NHS
13 Your Springboard to International Success
16 World-Class Innovation Hubs
22 Global Success Stories
24 Enjoy a Better Quality of Life
26 Is your business eligible for the Global Growth Programme?
27 Register Now

LAUNCH IN THE UK

A GLOBAL HUB FOR TECH INNOVATION


Home to the world’s third largest tech sector, a globally renowned legal system and with a reputation for world-class R&D, the UK’s proven track record of driving business growth and success is highly attractive for innovative international companies.

Combined with our highly accessible language, state-of-the-art digital infrastructure and unrivalled accessibility, pioneering international firms have everything they need to successfully launch and scale in a thriving UK market of over 60 million people.

Add to that our internationally recognised education system, which includes four of the world’s top ten universities, and it’s clear how the UK can help you realise your business ambitions.

 **LARGEST AIR TRANSPORT SYSTEM IN EUROPE, PROVIDING EASY ACCESS TO INTERNATIONAL MARKETS WORLDWIDE.**

 **NO.1 LOCATION IN EUROPE FOR UNICORN COMPANIES.**

 **25% CORPORATION TAX - ONE OF THE LOWEST IN THE G20.**

SCALE IN THE WEST MIDLANDS

INNOVATION IS IN OUR DNA

The West Midlands is the UK’s leading region for Foreign Direct Investment, recording the highest annual growth rate of all UK locations. We’re working at pace to deliver on the UK Government’s ‘Science & Technology Superpower’ ambitions.

Our region has the perfect combination of world-class research assets, specialist talent, committed public sector support and unique technological capabilities, making it the ideal destination for groundbreaking companies to thrive. Located at the heart of the UK, we’re a three-city region comprising of Coventry, Wolverhampton and Birmingham, the UK’s second city. We’re sustained by a growing population of 4.3 million people and one of the youngest, most diverse talent pools in the UK, with 32% of residents under the age of 25.

Life would look very different without West Midlands’ innovations. The pacemaker, the world’s leading brain cancer drug and the world’s first Ibuprofen patch were all developed here. Famed pioneers James Watt, Matthew Boulton, William Shakespeare, James Starley, John Cadbury, and J.R.R. Tolkien all hail from the region.

 **£108BN FULL-SERVICE ECONOMY**

 **THE UK’S MOST ACCESSIBLE AIRPORT BY RAIL AND ROAD, WITH LINKS TO 400 GLOBAL DESTINATIONS**

 **HS2 WILL CONNECT LONDON TO THE WEST MIDLANDS IN JUST 38 MINUTES**

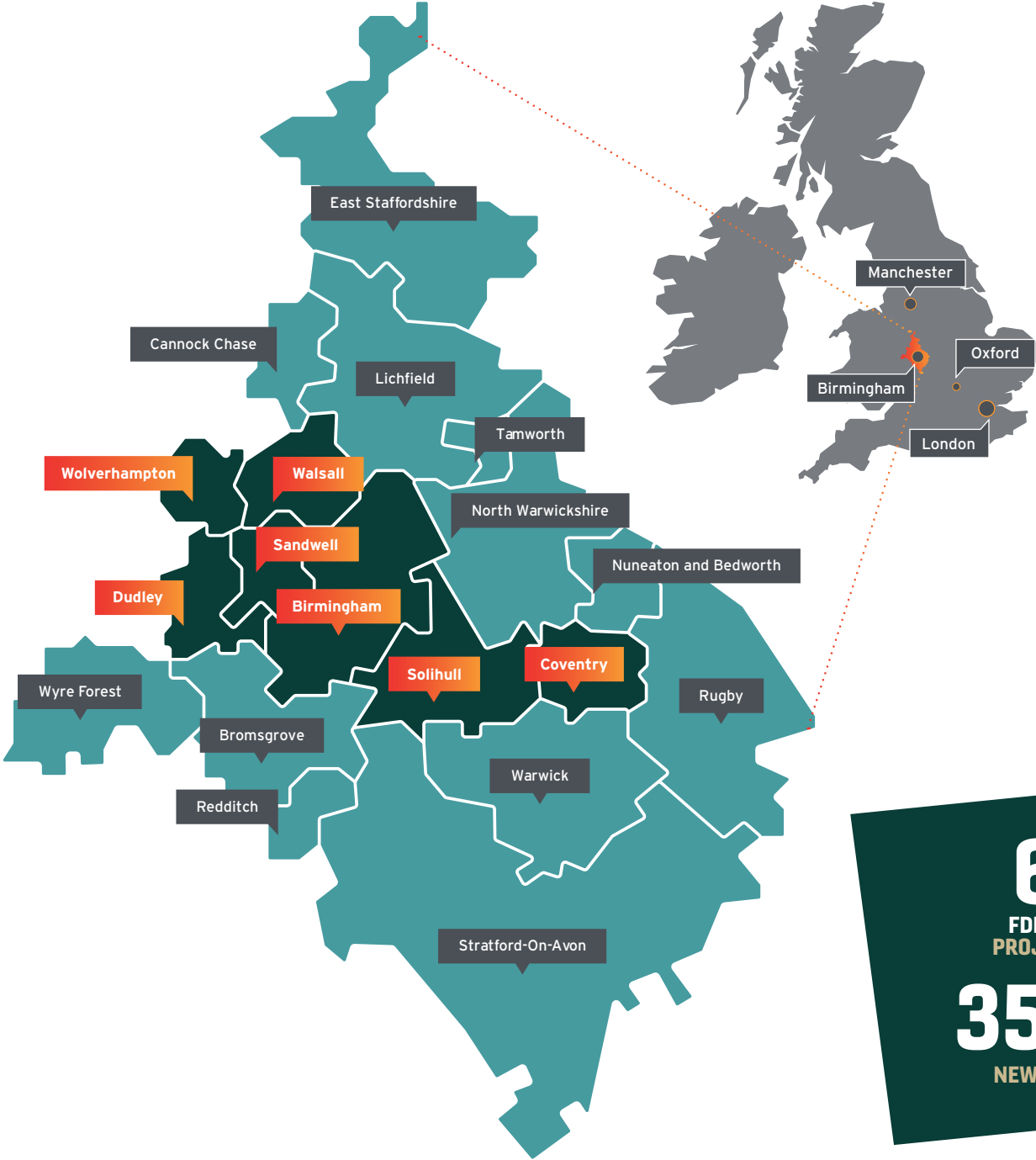
 **90% OF THE UK LIES WITHIN A FOUR-HOUR DRIVE-TIME, INCLUDING BRISTOL, CAMBRIDGE, OXFORD, LEEDS AND MANCHESTER**

WORK WITH THE WEST MIDLANDS GROWTH COMPANY

The West Midlands Growth Company (WMGC) is the official Investment Promotion Agency for the West Midlands region.

Our specialist teams act as strategic partners and consultants to investing companies, ensuring they receive comprehensive support across their entire business plan to make their relocation, expansion and growth here successful.

We’ve helped start-ups, high-growth SMEs and global corporations, such as HSBC UK and Goldman Sachs, to set up operations in the region and maximise growth opportunities.



600
FDI INVESTMENT
PROJECTS SECURED
35,000
NEW JOBS CREATED



THE GLOBAL GROWTH PROGRAMME

THE ULTIMATE UK MARKET ENTRY SUPPORT

The Global Growth Programme is a unique, fully funded UK market entry offering, designed to help international companies invest, establish and scale rapidly. Spanning multiple industries, the Global Growth Programme provides a bespoke, nine-month package of support to ambitious companies at all stages of the development cycle.

We want to work with companies that share our vision to build world-class UK capabilities in CleanTech, Creative & Digital Technologies, Future Mobility and HealthTech: whether you're reinventing the energy grid, launching a new medical device or revolutionising the future of cybersecurity.

FOUR TECH SECTORS



CleanTech



Digital Tech



Future Mobility



Health/ MedTech



20
SECTOR SPECIFIC PROGRAMMES

with access to



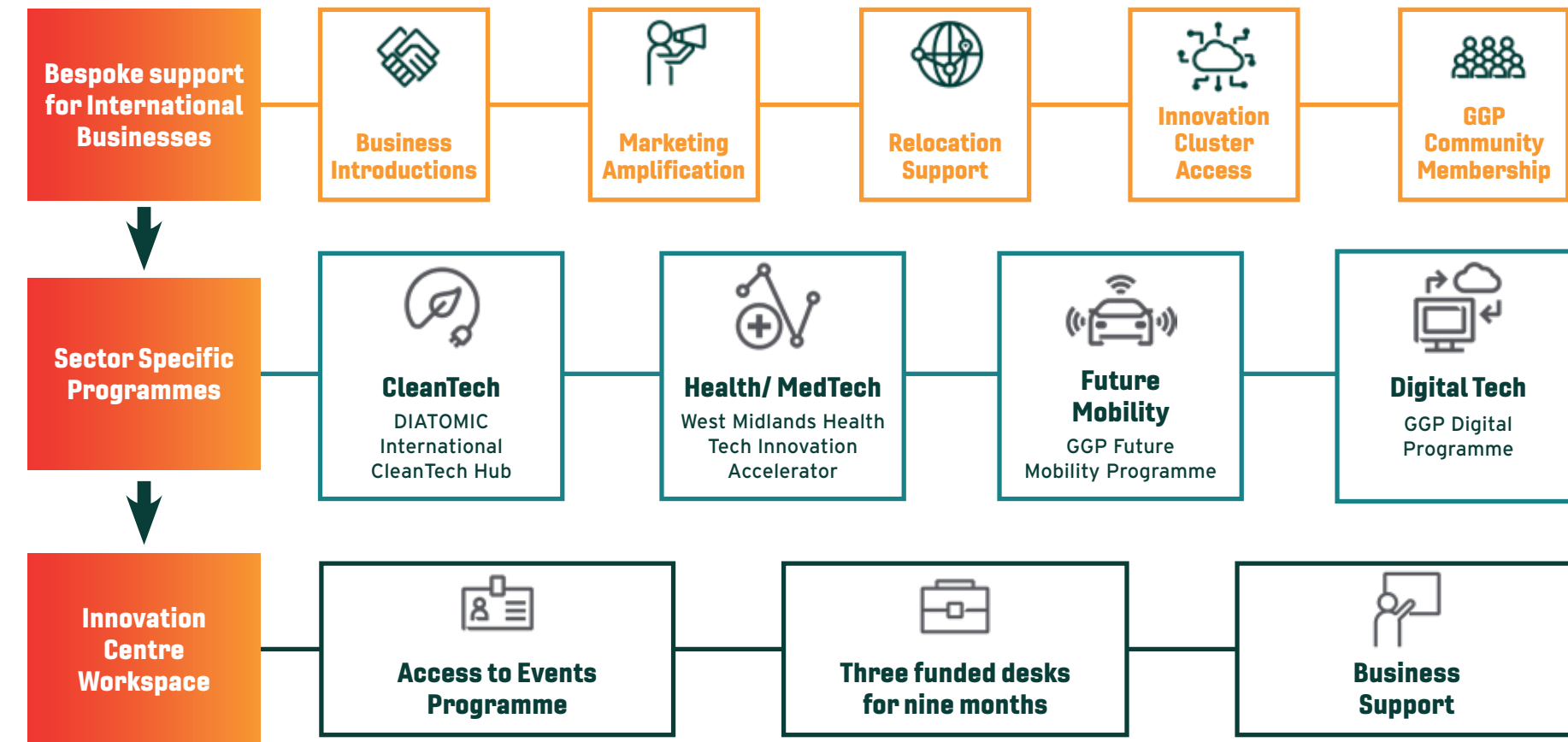
6
TOP UNIVERSITIES



10
INDUSTRY NETWORKS



15
LEADING RESEARCH INSTITUTES



ACCELERATE YOUR GROWTH WITH BESPOKE BUSINESS SUPPORT

The Global Growth Programme provides three layers of comprehensive value for innovative companies that includes bespoke business support to assist international expansion, access to sector specific innovation programmes, and nine months of sponsored workspace for up to three employees in one of six world-class innovation hubs across the region.

Through a dedicated account manager, you will receive support with establishing your UK operations and facilitated introductions to world-class R&D institutions, industry supply chains and talent providers.

Everything you need to pioneer innovative new products and supercharge your growth.

HEALTH AND MEDTECH HUB

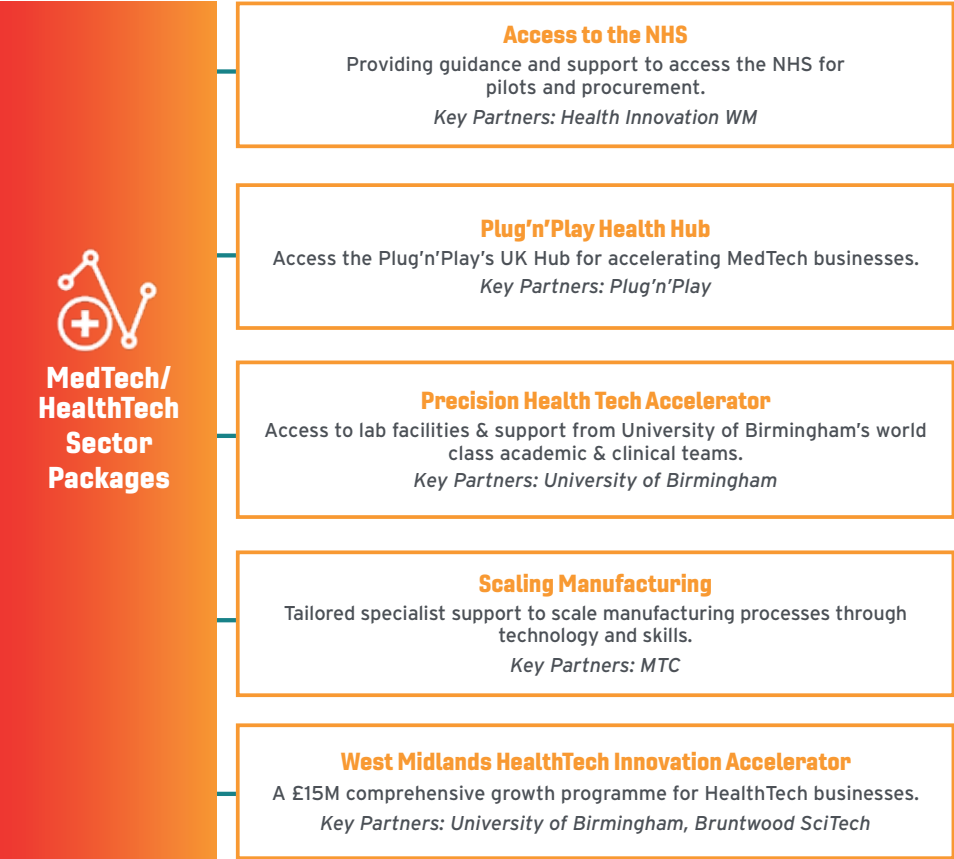
The West Midlands’ close-knit network of clinical research centres, hospitals and state-of-the-art innovation hubs offers a stand-out speed-to-market opportunity. Home to a full bed-to-benchside ecosystem, world leading medical research universities, a diverse population of 4.3 million people and recognised as one of the UK’s largest centres for clinical trials, it offers a unique environment to develop medical devices, pharmaceuticals and data-driven health products.

Join the Global Growth Programme and take advantage of bespoke Health and MedTech support designed to help your business rapidly scale up in the UK. Access the region’s state-of-the art R&D facilities, mature manufacturing supply chain, ethnically diverse patient population and unique UK connectivity to transform new technologies into commercially viable health solutions.

SPECIALIST HEALTH AND MEDTECH SUPPORT PACKAGES

Carefully curated by a team of industry experts, the Global Growth Programme’s Health and MedTech Hub consists of five modules, each designed to offer bespoke, specialist sector support for companies operating within their respective fields.

Participating companies can access world-class R&D facilities, highly respected industry experts and unrivalled business support to successfully test, scale and commercialise exciting, game-changing Health and MedTech technologies.



*Nine months fully funded workspace. Access to research expertise and facilities may be funded, part funded or not funded. This is determined on a case-by-case basis.

WEST MIDLANDS HEALTH TECH INNOVATION ACCELERATOR (WMHTIA)

Uniting a collaborative network of 21 industry stakeholders including the National Health Service (NHS) and leading West Midlands universities, the West Midlands HealthTech Innovation Accelerator (WMHTIA) is a major government funded initiative that streamlines the conversion of health and medical technologies from concept to real-world implementation.

Innovative companies looking to navigate the challenges of medical translation will benefit from a package of support that includes:

- **Use of real-world NHS product usability testing**, evaluation services and international market access support, enabling the opportunity to develop and prototype next-generation products and technologies.
- **Access to regulatory and clinical engagement**, including expert infrastructure and innovation support for product development including prototyping, regulation, clinical trials and evaluation.
- **Sponsored office facilities** for up to three desks at Bruntwood SciTech's Birmingham Health Innovation Campus (BHIC)*, the Innovation Birmingham Campus, or one of the other four locations across the region.
- **Membership** of Bruntwood's Science and Technology community, consisting of more than 500 science and technology businesses across the UK. Participate in a programme of regular business and networking events.
- **Facilitated introductions** to the West Midlands' broader HealthTech and MedTech ecosystem.
- **Dedicated business support** based on your company's individual needs. Use monthly meetings with a dedicated business advisor to discuss assistance with commercial introductions, grant funding, professional advice, recruitment and securing local investment.

Note: Access to the WMHTIA programme is subject to a separate application and selection process.

*Nine months fully funded workspace. Access to research expertise and facilities may be funded, part funded or not funded. This is determined on a case-by-case basis.
+Opening early 2025

West Midlands HealthTech Innovation Accelerator (WMHTIA)

The West Midlands HealthTech Innovation Accelerator (WMHTIA) strives to create a more streamlined and supportive programme in the West Midlands that helps HealthTech companies navigate the complexities of bringing new technologies to market.



NHS access

Regulatory support

Clinician support

PLUG AND PLAY HEALTH HUB

Through the Global Growth Programme, companies can access Plug and Play UK Health, using industry-leading expertise to accelerate innovation cycles, reduce R&D risks and connect to a global ecosystem of startups, fostering cross-industry collaboration. The programme will focus on the commercial development and acceleration of high-growth startups in the MedTech and HealthTech areas.

Subject-specific accelerator programmes available include AI Models, Digital Discovery, Digital Therapeutics and MedTech. Ideal for companies seeking access to corporates to accelerate their development, this package includes:

- **Access to Plug and Play's specialist Global Health Accelerator Programme**, as part of a cohort of just 12 businesses benefiting from this six-month initiative.
- **Opportunity** to secure Pilot Projects with Corporate Partners and explore ways of collaborating on a pilot project through our network of corporate partners.
- **Expanding** your global network and accessing our world-class mentorship programme which will connect you with the most relevant experts.
- **Potential** to find an investment through our extensive investor network or Plug and Play Ventures.
- **Sponsored office facilities** for up to three desks at Bruntwood SciTech's Birmingham Health Innovation Campus (BHIC)*, the Innovation Birmingham Campus, or one of the other four locations across the region.
- **Membership** of Bruntwood's Science and Technology community, consisting of more than 500 science and technology businesses across the UK. Participate in a programme of regular business and networking events.
- **Facilitated introductions** to the West Midlands' broader HealthTech and MedTech ecosystem.
- **Dedicated business support** based on your company's individual needs. Use monthly meetings with a dedicated business advisor to discuss assistance with commercial introductions, grant funding, professional advice, recruitment and securing local investment.

Note: The Plug and Play Health Accelerator is subject to a separate application and acceptance on to the Plug and Play Health Hub programme.

Plug and Play

Plug and Play is a Silicon Valley originated venture capital firm that connects large corporations to the worlds' best startups through industry focused accelerator programmes. Its global network consists of 50,000 startups, 500+ world-leading corporations, and hundreds of venture capital firms, universities, and government agencies across multiple industries.



PLUGANDPLAY

bruntwood
SciTech



Specialist Global
Health Accelerator
Programme



Innovation
Centre
Workspace



Community
& Business
Support

PRECISION HEALTH TECHNOLOGIES ACCELERATOR (PHTA)

Companies seeking specialist facilities and world-class academic support to accelerate development can benefit from the University of Birmingham's Precision Health Technologies Accelerator (PHTA).

With custom-built, fully serviced state-of-the-art laboratory and office space, this package is a catalyst for collaboration. It enables partnerships with researchers and opinion leaders in a multitude of clinical specialisms and scientific disciplines to advance new therapies and products to patients faster. This package of support consists of:

- Access to fully serviced wet and dry laboratory and office accommodation** that includes Category 2 laboratories with write up space, flexible office spaces, hot desking and shared amenities, makerspace prototyping and small-batch manufacturing facilities.
- Specialist research support and collaboration opportunities with the world-leading University of Birmingham's clinical/academic teams for the development, testing and trialling of new products and services.
- Sponsored office facilities* for up to three desks at Bruntwood SciTech's Birmingham Health Innovation Campus (BHIC)+, the Innovation Birmingham Campus, or one of the other four locations across the region.
- Membership of Bruntwood's Science and Technology community, consisting of more than 500 science and technology businesses across the UK. Participate in a programme of regular business and networking events.
- Facilitated introductions to the West Midlands' broader HealthTech and MedTech ecosystem.
- Dedicated business support based on your company's individual needs. Use monthly meetings with a dedicated business advisor to discuss assistance with commercial introductions, grant funding, professional advice, recruitment and securing local investment.

*Nine months fully funded workspace. Access to research expertise and facilities may be funded, part funded or not funded. This is determined on a case-by-case basis.

** There is an additional charge to access PHTA's lab facilities based on individual requirements.

+Opening early 2025

Precision Health Technologies Accelerator (PHTA)

The Precision Health Technologies Accelerator is the University of Birmingham's flagship research facility for life sciences. Located on Bruntwood SciTech's new Birmingham Health Innovation Campus (BHIC), the PHTA brings together entrepreneurs, start-ups and scale-ups together with the next generation of academic and clinical leaders, creating unique opportunities to commercialise ideas and accelerate the rapid development of cutting-edge therapies and technologies.



bruntwood
SciTech



Wet & dry
lab facilities



Industry
Trials Hub



Clinical
Immunology
Service

SCALING ADVANCED MANUFACTURING

Home to one of the biggest advanced manufacturing clusters in the UK, the West Midlands offers significant opportunities for the development and manufacture of traditional, emerging and next-generation medical devices and products.

The Global Growth Programme's Scaling Advanced Manufacturing module is designed for Health and MedTech companies seeking to scale-up their manufacturing process via specialist support with technology and skills. With the help of experts from the UK's Manufacturing Technology Centre (MTC), your business could evolve its manufacturing capability from bench to mass-market production. The package comprises:

- **An initial discovery workshop with experts from the Manufacturing Technology Centre**, including a free consultation and tour of the organisation's facilities.
- **Bespoke proposal tailored by** MTC experts detailing their services and how they can help scale your production capability.
- **Sponsored office facilities** for up to three desks at Bruntwood SciTech's Birmingham Health Innovation Campus (BHIC)*, the Innovation Birmingham Campus, or one of the other four locations across the region.
- **Membership** of Bruntwood's Science and Technology community, consisting of more than 500 science and technology businesses across the UK. Participate in a programme of regular business and networking events.
- **Facilitated introductions** to the West Midlands' broader HealthTech and MedTech ecosystem.
- **Dedicated business support** based on your company's individual needs. Use monthly meetings with a dedicated business advisor to discuss assistance with commercial introductions, grant funding, professional advice, recruitment and securing local investment.

*Nine months fully funded workspace. Access to research expertise and facilities may be funded, part funded or not funded. This is determined on a case-by-case basis.

+Opening early 2025

Manufacturing Technology Centre

The Manufacturing Technology Centre (MTC) has been established to prove innovative manufacturing processes and technologies in an agile environment in partnership with industry, academia and other institutions.



Expert
manufacturing
support



Innovation
Centre
Workspace



Community
& Business
Support



ACCESS TO THE NHS

The UK's National Health Service (NHS) is a publicly funded healthcare system providing free care for over 67 million people. With its centralised healthcare system and infrastructure, the NHS provides access to a diverse patient population, making it a model environment for conducting clinical trials and research studies. Businesses can collaborate to conduct trials and gather the produced data to validate the efficacy and credibility of their products, technologies, services and therapies.

Through the Global Growth Programme's Access to the NHS module, your company can benefit from NHS access via Health Innovation West Midlands (HIWM). Ideal for businesses needing real world trials and adoption, it includes:

- **Free initial assessment with Health Innovation West Midlands**, including an expert appraisal of your product, including assessing its suitability within the NHS and practical feedback.
- **NHS Pilot Access**, including support identifying appropriate partners and clinicians for pilots and evaluation. Upon favourable assessment, you'll also receive support to facilitate real-world trials within an appropriate part of the NHS for your business, including an evaluation to assess suitability.
- **NHS Adoption Support** following the successful review of the business case and pilot's impact. Health Innovation West Midlands will provide support with navigating NHS procurement and advise on the feasibility and options for wider roll-out across NHS England.
- **Sponsored office facilities** for up to three desks at Bruntwood SciTech's Birmingham Health Innovation Campus (BHIC)*, the Innovation Birmingham Campus, or one of the other four locations across the region.
- **Membership** of Bruntwood's Science and Technology community, consisting of more than 500 science and technology businesses across the UK. Participate in a programme of regular business and networking events.
- **Facilitated introductions** to the West Midlands' broader HealthTech and MedTech ecosystem.
- **Dedicated business support** based on your company's individual needs. Use monthly meetings with a dedicated business advisor to discuss assistance with commercial introductions, grant funding, professional advice, recruitment and securing local investment.

*Nine months fully funded workspace. Access to research expertise and facilities may be funded, part funded or not funded. This is determined on a case-by-case basis.

+Opening early 2025

Health Innovation West Midlands (HIWM)

Part of the National Health Innovation Network funded by NHS England, Health Innovation West Midlands explore, test and accelerate the adoption and spread of innovative ideas and technologies with the potential to transform health and social care.



Free initial
assessment



Pilot
access



Adoption
support



Community
& Business
Support



YOUR SPRINGBOARD TO INTERNATIONAL SUCCESS

The Global Growth Programme provides comprehensive support enabling companies to swiftly launch and scale UK operations.

FOUNDERS & EARLY-STAGE BUSINESSES

Our programme offers expert support in setting up and testing your proposition and business model. We'll help with securing valuable seed funding. Take advantage of high spec hot-desking and co-working spaces, benefit from tailored business advice, access a network of unique research data and impressive facilities and get support with taking the necessary steps to protect your Intellectual Property.

HIGH GROWTH BUSINESSES

Receive specialist assistance setting up your UK subsidiary and implementing your market entry plan, along with access to collaboration opportunities with an unrivalled network of innovation partners.

We'll help you validate your 'go to market' approach for the United Kingdom and Europe, as well as build local business contacts, enabling you to develop a high-quality commercial pipeline.

You'll also benefit from strategic relationships with businesses and institutions that can offer access to skills, talent, innovative research and investment. All vital to driving business success.

CORPORATE INNOVATION

De-risk and develop your innovation strategy using our programme to advance and test new products and services, launch new ventures and spin outs, and set up new commercial collaborations.

The Global Growth Programme connects your business directly into local entrepreneurial networks and leading research institutions that can support transformation in your business.

We'll also connect you to sources of graduate and postgraduate talent as well as help to relocate your employees to the region.



BESPOKE SUPPORT DESIGNED TO MEET THE NEEDS OF YOUR BUSINESS

Every business is different, with its own unique set of challenges and requirements. The Global Growth Programme's suite of support is designed to meet a range of needs specific to your business size or sector.

			EARLY-STAGE BUSINESS	HIGH-GROWTH BUSINESS	CORPORATIONS
Relocation	Setting up a UK entity/subsidiary	Providing specialist legal and tax advice to set up your UK company entity	●	●	
	Setting up a new Global HQ in the UK	Providing specialist legal and tax advice to move your existing headquarters to the UK	●	●	
	Team orientation	Support with relocation and adapting to living and working in the UK	●	●	●
	Community Support	Being part of a peer group community of other international tech businesses	●	●	●
Commercial Launch	Guidance in shaping the proposition & business model	Helping you define how you will commercialise your technology	●		
	Market testing and entry	Helping you to validate the market for your products and services in the UK	●	●	●
	Commercial traction	Commercial introductions into UK-West Midlands business networks	●	●	●
	Corporate collaborations	Linking corporates to entrepreneurial companies with innovative products and services		●	●
	Securing IP Protection	Access to intellectual property specialists to advise on patents and copyright, both in the UK and internationally	●	●	

			EARLY-STAGE BUSINESS	HIGH-GROWTH BUSINESS	CORPORATIONS
Funding	Preparing for and accessing seed funding	Helping you prepare to raise your initial funding and making introductions to local angel and early-stage funding networks	●		
	Preparing for and accessing growth funding	Helping you prepare to raise Series A+ funding and making introductions to the local VCs and investment community		●	
Research & Product Development	Accessing specialist research facilities	Access to leading UK facilities to accelerate the development, testing and demonstration of your products	●	●	●
	Accessing specialist research and technical expertise	Providing direct links to world class universities and research institutes in the region	●	●	●
	Access to regulatory support	Access to specialists in regulation to assist you in securing UK accreditation	●	●	●
Talent	Access to clinical support	Access to leading hospitals, clinicians and the NHS	●	●	●
	Support with talent recruitment	Connections to specialist headhunting and recruitment firms	●	●	●
Profile building	Accessing student placements and graduates	Connections to placements and graduate recruitment in the local universities	●	●	●
	In-market communications	Amplification of your company communications in the West Midlands and broader UK market	●	●	
Office Space	Fully funded desk space within an innovation community	Three desks for nine months within a choice of Innovation Districts across the West Midlands offering regular networking events	●	●	●

THRIVE IN OUR WORLD-CLASS INNOVATION HUBS

The Global Growth Programme brings together specialist technology hubs from across the region to offer you access to exceptional expertise and opportunities. Located across Birmingham, Coventry and Wolverhampton, each state-of-the-art facility is a centre of innovation and cutting-edge research, where CleanTech, Future Mobility, MedTech and Creative & Digital Tech firms collaborate and thrive. They also act as a gateway to additional West Midlands R&D institutions and business accelerators.

ACCESS THE WHOLE REGION
SIX LANDING HUBS



BIRMINGHAM

The largest UK city outside London, Birmingham is constantly evolving. Once an 18th century manufacturing powerhouse, the city is now a world-class centre of business, culture, education and technology that is using a long tradition of innovation to shape the future. A fascinating hub of diverse cultures, fine cuisine and contemporary living, Birmingham is an excellent choice for business and pleasure.

The Global Growth Programme offers access to three innovation hubs across the city.

INNOVATION BIRMINGHAM

bruntwood
SciTech

In the heart of Birmingham's city centre Knowledge Quarter is Bruntwood SciTech's Innovation Birmingham, a cutting-edge digital tech campus with a vibrant community of over 120 forward-thinking tech companies.

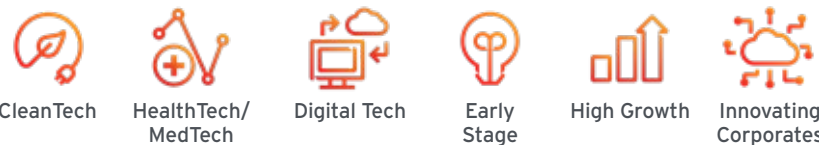
It has close links to neighbouring Aston and Birmingham City Universities and their world-class specialist institutes and facilities in areas including transport digitisation, bioenergy, cyber-forensics, AI data science and software development. Innovation Birmingham offers unique collaboration opportunities, opening doors for product development, funding, talent and commercial growth.

Over the past decade, the hub has helped more than 1500 companies grow their business in the region's tech industry.

Contact Details

Innovation Birmingham, Holt Street, Birmingham, B7 4BP
w: bruntwood.co.uk/our-locations/birmingham/innovation-birmingham/

Sector Specialisms



"This is absolutely the place to be for tech. Innovation Birmingham has got a track record helping businesses not just scale, but scale successfully, scale sustainably and have access to investment, business support and skills that would otherwise be really hard to come by."

Yiannis Maos MBE, CEO at TechWM

BIRMINGHAM HEALTH INNOVATION CAMPUS

From early 2025, the new Birmingham Health Innovation Campus (BHIC) will offer premium lab and office space in the heart of a critical cluster of health excellence. Delivered through a long-term collaboration between the University of Birmingham and Bruntwood SciTech, BHIC opens pathways into valuable networks for research, funding, product development and collaboration in key areas of healthcare innovation including Biopharma, MedTech, Precision Medicine and Genomics.

BHIC is the home of the University of Birmingham's Precision Health Technologies Accelerator (PHTA) which provides access to the expertise, resources and infrastructure required to enable translation of healthcare innovations - including phase one to three clinical trials and real-world evaluation.

The campus is also home to the new £14m West Midlands HealthTech Innovation Accelerator (WMHTIA), which provides unprecedented access to expert infrastructure and product development support at every stage of the innovation process, including prototyping, regulation, clinical trials and evaluation.

Contact Details
Aston Webb Boulevard, Selly Oak, Birmingham, B29 6SJ
w: bruntwood.co.uk/our-locations/birmingham/birmingham-health-innovation-campus/

Sector Specialisms



"I think the phrase 'unexpected ways' sums up the STEAMhouse. If you work in an environment where there are other business owners and amazing staff, you invariably find that you get help in ways that you didn't even know that you needed."

John Morse-Brown, Chief Operating Officer at Pigeon Posted

STEAMHOUSE



Powered by
BIRMINGHAM CITY
University

Located in Birmingham's Knowledge Quarter, STEAMhouse provides a wealth of support to help your digital tech business launch, sustain and scale. The hub is home to exciting start-ups and scale-ups in sectors ranging from software development and digital marketing to blockchain and cybersecurity.

With over 120,000ft² of high-quality space located over five floors, STEAMhouse offers state-of-the-art production space and workshops with access to immersive AR/VR technology and a comprehensive business support package.

Alongside initial onboarding and in-depth client needs analysis to implementing the support required to grow your business, STEAMhouse offers a superb programme of business workshops, mentoring and networking events. The hub also hosts a 72-desk business incubator, where entrepreneurs and fledgling businesses can get all the support and knowledge they need to hit the ground running.

Contact Details
Belmont Row, Birmingham, B4 7RQ
w: steamhouse.org.uk/

Sector Specialisms



TYSELEY ENERGY PARK

Tyseley Energy Park (TEP) is located at the heart of Birmingham Green Energy Innovation District in the east of the city. With its mission to transform clean energy innovation in Birmingham and the West Midlands by stimulating and demonstrating new technologies and turning them into fully commercially viable energy systems, TEP will contribute to the West Midlands' commitments to become a net zero carbon economy by 2041.

Within the park is the University of Birmingham's Energy Innovation Centre (BEIC), a low and zero carbon refuelling station, a biomass power station, a hydrogen electrolyser, and the National Centre for the Decarbonisation of Heat, which is due to be completed in 2026.

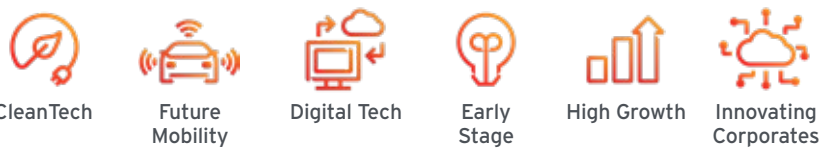
TEP has created an environment where heat and power, and waste to value focused businesses can receive support and collaboration opportunities in a location that is a key focus of Birmingham's decarbonisation efforts. From testing an innovative idea, to tailored incubation programmes and commercial demonstrators, TEP offers varying levels of support dependent on the maturity of your business and technology readiness.

In partnership with the University of Birmingham (UoB) and Birmingham City Council, Tyseley Energy Park can access knowledge and resource that enable companies to develop sustainable, cutting-edge innovations at the park. Take advantage of the University's R&D expertise - and TEP's world-class industry networks - to scale and commercialise your product.

TEP's Business Incubation Hub assists climate-focused startups to develop their proposition and enter the market. It is also a key facilitator of the Climate Innovation Platform, an incubation programme designed by UoB and the Energy Systems Catapult.

Contact Details
Fordrough, Hay Mills, Birmingham, B25 8DW
w: tyseleyenergy.co.uk

Sector Specialisms



"Tyseley Energy Park tackles the challenges of clean energy on multiple fronts, from hydrogen-fuelled vehicles to energy from waste and other renewable sources. It's a great demonstration of what can be achieved through effective partnership between industry and academia."

Sir Keir Starmer, Leader of the Labour Party

COVENTRY

Surrounded by countryside, market towns and quaint villages, the city of Coventry offers a perfect location for businesses to grow and innovate in the UK.

An exciting city constantly evolving to meet the ever-changing demands of the 21st century, Coventry is home to some of the UK's leading R&D facilities for industries including CleanTech and Future Mobility. It also offers easy access to nearby Leamington Spa - one of the UK's largest games development clusters.



UNIVERSITY OF WARWICK SCIENCE PARK



The University of Warwick Science Park is one of Europe's premier science parks, with a vibrant community of more than 145 innovation-driven start-ups, scale-ups and multi-national companies operating in the CleanTech, Creative & Digital Technologies and Future Mobility sectors. Around a quarter of the businesses here are international companies establishing their first UK base.

The UWSP offers high-spec, high-quality office and lab space in three locations across Coventry and Warwickshire, each with room for your business to establish, expand and grow.

You'll have access to a range of sector-specific business accelerators and incubators, such as the Deep Tech Innovation Centre, which equips entrepreneurs and start-ups with the tools they need to solve global challenges. In addition, you can access The Climb, an inspirational event space that allows cutting-edge businesses to attend - and stage - innovation-related events.

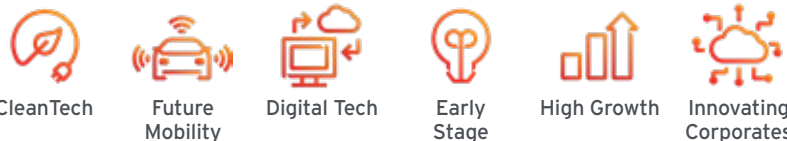
Businesses working in the Future Mobility sector will benefit from the hub's proximity to the National Automotive Innovation Centre, which brings together some of the brightest minds in the industry, while CleanTech firms can take advantage of links with WMG's Energy Innovation Centre - a national facility for battery research.

Participants in the Global Growth Programme can access the hub's network of business angels, as well as the Science Park's own in-house technical marketing agency for advice on market development and product launch. Of course, your business will also have access to the state-of-the-art facilities and talent pool of a renowned research-intensive university.

Contact Details

Venture Centre, Sir William Lyons Road, Coventry, CV4 7EZ
w: www.warwick.ac.uk

Sector Specialisms



"At Warwick we're ready to welcome tech-driven businesses to our vibrant community and help them gain maximum benefit from our innovation ecosystem."

Mark Tock, Chief Operations Officer
at University of Warwick Science Park

WOLVERHAMPTON

Located in the northwest of the region, Wolverhampton is a historic city bursting with creativity, originality and entrepreneurial flair. Home to one of the world's oldest professional football teams, Wolverhampton Wanderers, the city was once a major centre for coal mining and steel production.

With an economy rooted in engineering, Wolverhampton is investing heavily in zero-carbon initiatives via its cutting-edge Green Innovation Corridor. From the University of Wolverhampton's £120m Springfield Campus to the National Centre for Sustainable Construction, the city is at the heart of the West Midlands' world-class low-carbon economy.



UNIVERSITY OF WOLVERHAMPTON SCIENCE PARK



The University of Wolverhampton Science Park (UoWSP) is a thriving tech-business ecosystem that facilitates collaboration, growth and innovation. Businesses here regularly partner on joint ventures - sharing knowledge,

resources and exploring new business and supply chain opportunities to develop more efficient processes and advance their products and services.

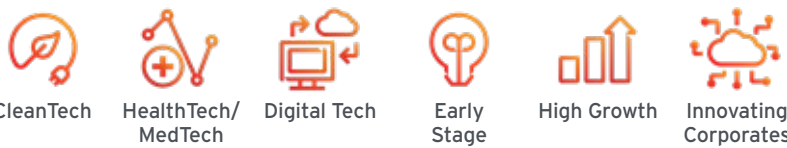
As part of the community, you'll have access to the National Brownfield Institute (NBI), a world-class research centre that, through innovation and partnership with the construction industry, is focusing on the practical application of future brownfield regeneration. The NBI hosts a range of technologies and facilities to support businesses working in the sector, including a state-of-the-art nine-metre Igloo immersive cylinder.

When it comes to supporting your growth, the area's leading business support organisation, the Black Country Chamber of Commerce, is co-located on site. The UoWSP also holds regular networking events and seminars that will connect your business to the University's valuable knowledge and research networks and world-class facilities.

Contact Details

Glaisher Drive, Wolverhampton, WV10 9RU
w: www.wolverhamptonsp.co.uk

Sector Specialisms



"The specialist facilities at the Science Park are ideal for businesses like ours, giving us the opportunity to enhance our research and development activities. It also allows us to access a multitude of support channels and collaboration with like-minded businesses."

Matt Eccles, Marketing Director at Tytek Group

GLOBAL SUCCESS STORIES

Since the Global Growth Programme launched in 2022, 35 businesses have landed into the region creating over 500 jobs.



Leveraging cutting edge Virtual Reality developed at India's top engineering university (IIT Madras), Skillveri's platform provides training for high-precision skills in the engineering and manufacturing sectors.

"With our target customers spread widely across England and Scotland, it made perfect sense to position ourselves in the West Midlands - right at the heart of the UK. As well as being extremely well connected to other major UK cities by road and rail, Birmingham was a much more cost-competitive option than the likes of London."

"Being part of the West Midlands Global Growth Programme gave us a real head-start on our UK growth journey. Having access to free desk space at Bruntwood SciTech - where we had dedicated consultancy and networking opportunities on our doorstep - has helped us to hit the ground running and thrive in the region from day one."

Sabarinath C. Nair, CEO at Skillveri



Mind & Matter Technology is an education technology consulting business. The Global Growth Programme helped them to establish a base here and now they have ambitious expansion plans.

"The support we've received from the West Midlands Global Growth Programme started before we even incorporated in the UK. Having done that, they've been very proactive in helping us network with other companies and in the West Midlands arena itself. I think they've delivered on everything."

Sukhbinder Heer - CEO, Mind & Matter Technology



Bellwether Industries is a pioneering urban air mobility company, providing compatible solutions for accessible personal flight in cities.

"The West Midlands' unique combination of an established manufacturing heritage and world-class strengths in emerging technologies made it the obvious location for us to test and scale our innovative eVTOL solutions."

The best thing about being part of the West Midlands Global Growth Programme was having around-the-clock access to bespoke consultancy, from our base at Bruntwood SciTech innovation hub. These conversations enabled us to quickly add value to our business model by identifying partnership and networking opportunities in the local ecosystem. A key highlight of the Programme was being invited to attend the Future Mobility event at the Commonwealth Games business conference, UK House, where we made valuable connections with local universities and key players in the global CleanTech industry."

Kai-Tse Lin, Co-Founder at Bellwether Industries



TheDisposal.Co

The Disposal Company is India's first automated plastic and carbon offsetting climate action initiative. Attracted by the UK's commitment to no plastics by 2024, they joined the Global Growth Programme to help develop their strategy.

"The support we've received is phenomenal. They've helped us register the company in the UK, understand taxes, and they've connected us to mentors and other businesses who can help us grow."

Pakhi Sharma - Senior Commercial Analyst, Disposal Company UK

ENJOY A BETTER QUALITY OF LIFE

There's more to the West Midlands than just work. It's a fantastic place to live.

Located in the heart of the UK, just 90 minutes from London, the West Midlands region is a combination of bustling cities, thriving town centres, ancient villages and unspoilt countryside.

Centuries of history can be seen across the region, in towns like Shakespeare's Stratford-upon-Avon or places like the Black Country Museum. We have world-class shopping experiences, such as Birmingham's Bullring, a globally diverse culinary sector, and more canals, public parks and green spaces than anywhere in Europe.

The West Midlands has some of the UK's best cultural, leisure, and sporting facilities, including the famous Edgbaston Cricket Ground and Belfry Golf Course. We're also home to Premier League football clubs Aston Villa and Wolverhampton Wanderers.

Compared to other parts of the UK, your money goes further here. The average house price is 60% cheaper than in London and rents are far less too. If you're bringing your family, you'll be pleased to know the area also has excellent schools, universities and healthcare facilities.

Our warm, welcoming nature has made the West Midlands one of the most diverse regions in Europe. You'll find people from 190 different countries living here.

Will you be next?



THE HIGHEST
CONCENTRATION OF
MICHELIN-STARRED
RESTAURANTS IN
THE UK



EXPLORE A THREE-CITY
METROPOLITAN REGION



92% LOWER
POPULATION DENSITY
THAN LONDON, GIVING
YOU MORE SPACE



EDUCATE YOUR
CHILDREN AT ONE OF 400
'OUTSTANDING' SCHOOLS



60+ GALLERIES AND
MUSEUMS TO EXPLORE A
RICH CULTURAL HISTORY



IS YOUR BUSINESS ELIGIBLE FOR THE GLOBAL GROWTH PROGRAMME?

To be eligible for selection, your business must meet the following entry requirements:

- A foreign owned business: a wholly owned subsidiary or branch of a non-UK company OR a UK company with least 10% of the shareholding held by a non-UK organisation.
- A technology-led business operating in one of the following qualifying sectors: Future Mobility, CleanTech, HealthTech or MedTech, Digital Technology (e.g. FinTech, EdTech).
- A clear UK strategy and plan: The business has researched the opportunity to expand in the UK that confirms the need to set up a new UK presence, along with a plan to deliver this.
- A clear intent to build a team in the West Midlands: You need to be prepared to deploy at least one member in the region at least five days per month throughout the programme, with a plan for up to three people to be present in the West Midlands within nine months and to recruit at least 10 local staff members within the West Midlands in three years.

Priority will be given to businesses with a credible business plan that have a strategic rationale for locating in the West Midlands, have the potential to create local employment and can benefit the local innovation ecosystem.



REGISTER YOUR INTEREST NOW

If you're ready to accelerate your entry into the UK by taking your place at the heart of an innovation powerhouse that's affecting global change, register your interest today.





**WEST
MIDLANDS**
GROWTH COMPANY
Invest in the West Midlands



investwestmidlands.com